



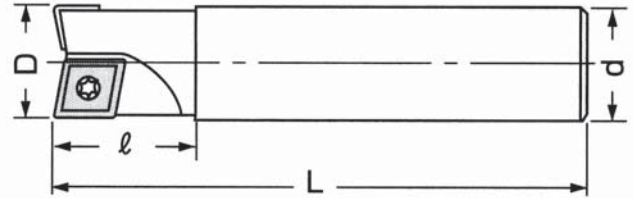
**End Mill &
Face Milling Cutter Systems**
端銑刀及面銑刀系統



EndMill Systems

A001 CJU Drilling & Milling Endmill CJU型 鑽銑共用端銑刀

端銑刀及面銑刀系統



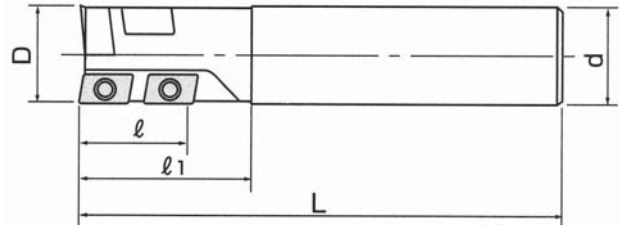
Code No. 型號	Type 規格	D	L	d	l	Teeth 刀數	Insert 刀片規格	Screw 螺絲	Wrench 扳手
SPA0002	CJU - 1010 x 130	10	130	10	30	1	CCMT060204	SCR - CJU2.5	T8
SPA0004	CJU - 1012 x 130	10	130	12	35	1			
SPA0006	CJU - 1212 x 130	12	130	12	30	1	CPMT080204Z		
SPA0008	CJU - 1616 x 120	16	120	16	30	2	CCMT060204 CPMT080204Z		
SPA0010	CJU - 1616 x 150	16	150	16	40	2			
SPA0012	CJU - 1616 x 175	16	175	16	40	2			
SPA0014	CJU - 1616 x 200	16	200	16	40	2			
SPA0016	CJU - 1716 x 150	17	150	16	40	2			
SPA0018	CJU - 1716 x 175	17	175	16	40	2			
SPA0020	CJU - 1716 x 200	17	200	16	40	2	CCMT060204 CPMT090204Z		
SPA0022	CJU - 2020 x 130	20	130	20	30	2			
SPA0024	CJU - 2020 x 150	20	150	20	40	2			
SPA0026	CJU - 2020 x 185	20	185	20	50	2			
SPA0028	CJU - 2020 x 210	20	210	20	50	2			
SPA0030	CJU - 2120 x 150	21	150	20	40	2			
SPA0032	CJU - 2120 x 200	21	200	20	40	2	CPMT090308 CPMT120308Z	SCR - CJU4	T15
SPA0034	CJU - 2525 x 130	25	130	25	40	2			
SPA0036	CJU - 2525 x 150	25	150	25	50	2			
SPA0038	CJU - 2525 x 220	25	220	25	70	2			
SPA0040	CJU - 2525 x 300	25	300	25	70	2			
SPA0042	CJU - 2625 x 200	26	200	25	50	2			
SPA0044	CJU - 2625 x 250	26	250	25	50	2	CPMT120408 CPMT160408Z	SCR - CJU5	T20
SPA0046	CJU - 3232 x 170	32	170	32	50	2			
SPA0048	CJU - 3232 x 250	32	250	32	80	2			
SPA0050	CJU - 3232 x 300	32	300	32	80	2			
SPA0052	CJU - 3232 x 350	32	350	32	80	2			
SPA0054	CJU - 3232 x 400	32	400	32	80	2			
SPA0056	CJU - 3332 x 200	33	200	32	50	2			
SPA0058	CJU - 3332 x 250	33	250	32	50	2			
SPA0060	CJU - 3332 x 300	33	300	32	50	2			

※Hitachi inserts recommended

※建議使用Hitachi銑刀片

A002 CSJ Drilling & Milling Endmill

CSJ型 鑽銑共用端銑刀

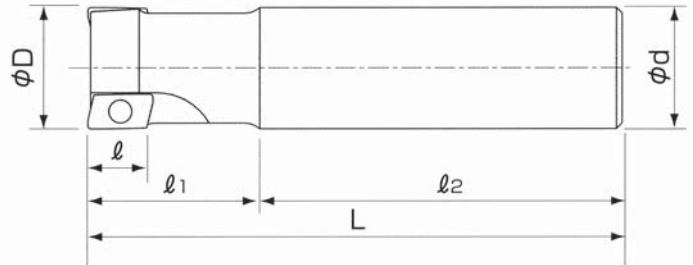
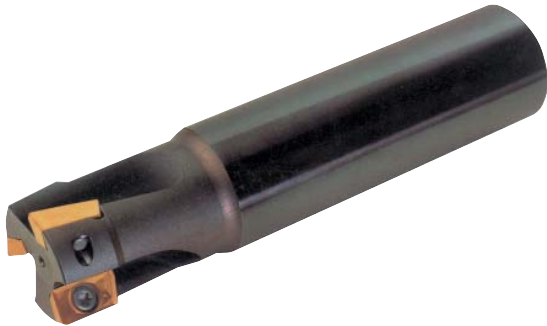


Code No. 型號	Type 規格	D	L	ℓ	ℓ1	d	Insert 刀片規格	Pcs 數量	Insert 刀片規格	Pcs 數量	Screw 螺絲	Wrench 扳手
SPA0082	CSJ - 2020 x 130	20	130	20	35	20	ADMT 100308L	1	ACMT 100308R	3	SCR - CSJ2.5	T8
SPA0084	CSJ - 2020 x 185	20	185	20	60	20						
SPA0086	CSJ - 2020 x 220	20	220	20	70	20						
SPA0088	CSJ - 2120 x 185	21	185	20	40	20						
SPA0090	CSJ - 2120 x 220	21	220	20	60	20	ADMT 12T308L	1	APMT 12T308R	3	SCR - CSJ3	T10
SPA0092	CSJ - 2525 x 140	25	140	25	40	25						
SPA0094	CSJ - 2525 x 220	25	220	25	75	25						
SPA0096	CSJ - 2525 x 270	25	270	25	75	25						
SPA0098	CSJ - 2625 x 220	26	220	25	40	25	APMT 160408L	1	APMT 150408R	3	SCR - CSJ4	T15
SPA0100	CSJ - 2625 x 270	26	270	25	40	25						
SPA0102	CSJ - 2625 x 300	26	300	25	40	25						
SPA0104	CSJ - 3232 x 150	32	150	32	50	32						
SPA0106	CSJ - 3232 x 230	32	230	32	90	32	APMT 170408L	1				
SPA0108	CSJ - 3232 x 280	32	280	32	90	32						
SPA0110	CSJ - 3532 x 150	35	150	35	50	32						
SPA0112	CSJ - 3532 x 200	35	200	35	50	32						
SPA0114	CSJ - 3532 x 250	35	250	35	50	32						
SPA0116	CSJ - 3532 x 300	35	300	35	50	32						
SPA0118	CSJ - 3532 x 350	35	350	35	50	32						
SPA0120	CSJ - 3532 x 400	35	400	35	50	32						

※Hitachi inserts recommended
 ※建議使用Hitachi銑刀片

EndMill Systems

A003 EHU High-Speed Endmill EHU型 超快削型端銑刀

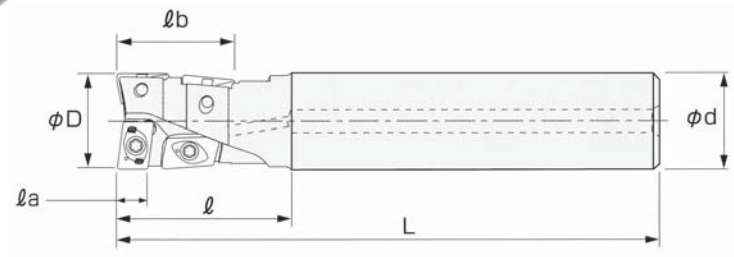


Code No. 型號	Type 規格	ØD	Ød	l	l1	l2	L	Teeth 刃數	Insert 刀片規格	Screw 螺絲	Wrench 扳手
SPA0142	EHU10 - 1616 x 120	16	16	10	30	90	120	2	JDMT1003	SCR - EHU2.5	T8
SPA0144	EHU10 - 1616 x 150	16	16	10	50	100	150	2			
SPA0146	EHU10 - 2020 x 130	20	20	10	30	100	130	3			
SPA0148	EHU10 - 2020 x 150	20	20	10	50	100	150	3			
SPA0150	EHU10 - 2525 x 150	25	25	10	40	110	150	4			
SPA0152	EHU10 - 2525 x 200	25	25	10	60	140	200	4			
SPA0154	EHU10 - 3025 x 150	30	25	10	40	110	150	5			
SPA0156	EHU10 - 3025 x 200	30	25	10	40	160	200	5			
SPA0158	EHU10 - 3232 x 150	32	32	10	40	110	150	5			
SPA0160	EHU10 - 3232 x 200	32	32	10	60	140	200	5			
SPA0162	EHU15 - 2525 x 150	25	25	15	40	110	150	2	JDMT1505	SCR - EHU4	T15
SPA0164	EHU15 - 2525 x 200	25	25	15	60	140	200	2			
SPA0166	EHU15 - 3025 x 150	30	25	15	40	110	150	2			
SPA0168	EHU15 - 3025 x 200	30	25	15	40	160	200	2			
SPA0170	EHU15 - 3232 x 150	32	32	15	40	110	150	3			
SPA0172	EHU15 - 3232 x 200	32	32	15	60	140	200	3			
SPA0174	EHU15 - 3532 x 150	35	32	15	40	110	150	3			
SPA0176	EHU15 - 3532 x 200	35	32	15	60	140	200	3			

※Hitachi inserts recommended
※建議使用Hitachi銑刀片

A004 EHJ Drilling & Milling Endmill

EHJ型 多功能快削型銑刀



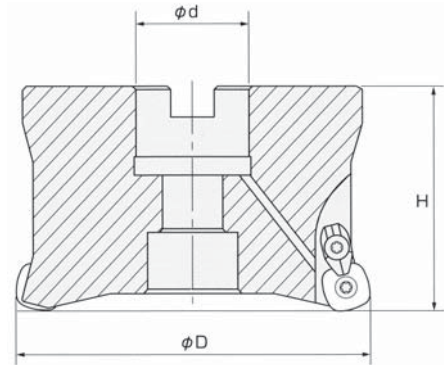
Code No. 型號	Type 規格	ØD	L	ℓa	ℓb	ℓ	Ød	Insert 刀片規格	Pcs 數量	Insert 刀片規格	Pcs 數量	Wrench 扳手
SPA0202	EHJ2 - 1616 x 120	16	120	4.5	8.5	33	16	JDMT 080308L	1	JDMT 090308R	1	T6
SPA0204	EHJ2 - 1616 x 175	16	175	4.5	8.5	50	16					
SPA0206	EHJ2 - 1716 x 120	17	120	4.5	8.5	33	16					
SPA0208	EHJ2 - 1716 x 175	17	175	4.5	8.5	33	16					
SPA0210	EHJ2 - 2020 x 130	20	130	5.5	9.5	35	20	JDMT 100308L	1	JDMT 100308R	1	T8
SPA0212	EHJ2 - 2020 x 185	20	185	5.5	9.5	60	20					
SPA0214	EHJ2 - 2120 x 130	21	130	5.5	9.5	35	20					
SPA0216	EHJ2 - 2120 x 185	21	185	5.5	9.5	35	20					
SPA0218	EHJ2 - 2525 x 140	25	140	7	12.5	45	25	JDMT 12T308L	1	JDMT 12T308R	1	T10
SPA0220	EHJ2 - 2525 x 220	25	220	7	12.5	75	25					
SPA0222	EHJ2 - 2625 x 140	26	140	7	12.5	45	25					
SPA0224	EHJ2 - 2625 x 220	26	220	7	12.5	45	25					
SPA0226	EHJ2 - 3232 x 150	32	150	8.5	14.5	50	32	JDMT 160508L	1	JDMT 150508R	1	T15
SPA0228	EHJ2 - 3232 x 230	32	230	8.5	14.5	90	32					
SPA0230	EHJ2 - 3332 x 150	33	150	8.5	14.5	50	32					
SPA0232	EHJ2 - 3332 x 230	33	230	8.5	14.5	50	32					

※Hitachi inserts recommended
 ※建議使用Hitachi銑刀片

EndMill Systems

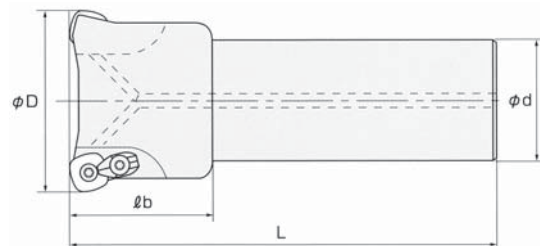
A005 ESRF High-Feed Milling Cutter ESRF型 高效率切削平面銑刀

端銑刀及面銑刀系統



Code No. 型號	Type 規格	ϕD	H	ϕd	Teeth 刃數	Insert 刀片規格	Wrench 扳手
SPA0252	ESRF - 50 x 3	50	50	22	3	SDNW1205ZDTN - R15 SDNT1205ZDTN - R15	T15
SPA0254	ESRF - 50 x 4	50	50	22	4		
SPA0256	ESRF - 63 x 4M	63	50	22	4		
SPA0258	ESRF - 63 x 4	63	50	25.4	4		
SPA0260	ESRF - 80 x 5M	80	70	32	5		
SPA0262	ESRF - 80 x 5	80	70	31.75	5		
SPA0264	ESRF - 100 x 6M	100	70	32	6		
SPA0266	ESRF - 100 x 6	100	70	31.75	6		

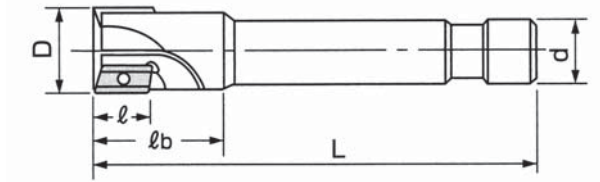
※Hitachi inserts recommended
※建議使用Hitachi銑刀片



Code No. 型號	Type 規格	ϕD	L	ϕd	lb	Teeth 刃數	Insert 刀片規格	Wrench 扳手
SPA0292	ESRF - 3232 x 150	32	150	32	70	2	SDNW1205ZDTN - R15 SDNT1205ZDTN - R15	T15
SPA0294	ESRF - 3232 x 200	32	200	32	70	2		
SPA0296	ESRF - 3232 x 250	32	250	32	70	2		
SPA0298	ESRF - 4032 x 200	40	200	32	70	3		
SPA0300	ESRF - 4032 x 250	40	250	32	70	3		
SPA0302	ESRF - 4032 x 300	40	300	32	70	3		

※Hitachi inserts recommended
※建議使用Hitachi銑刀片

A006 CEX High-Speed Endmill
CEX型 快削型端銑刀

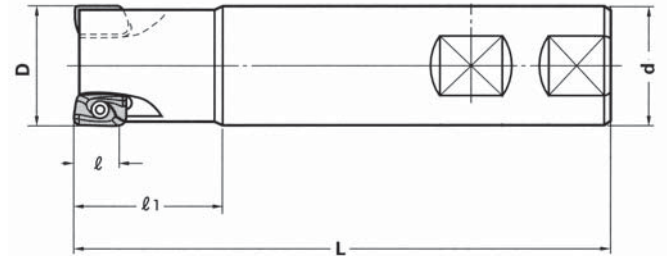


Code No. 型號	Type 規格	D	L	d	l	lb	Teeth 刃數	Insert 刀片規格	Screw 螺絲	Wrench 扳手
SPA0322	CEX - 1212 x 120	12	120	12	12	25	1	APET120204	SCR - CE x 3.5	T15
SPA0324	CEX - 1212 x 150	12	150	12	12	25	1			
SPA0326	CEX - 1616 x 120	16	120	16	12	30	1			
SPA0328	CEX - 1616 x 150	16	150	16	12	30	1			
SPA0330	CEX - 1616 x 180	16	180	16	12	30	1			
SPA0332	CEX - 2020 x 120	20	120	20	12	30	2			
SPA0334	CEX - 2020 x 150	20	150	20	12	30	2			
SPA0336	CEX - 2020 x 200	20	200	20	12	30	2			
SPA0338	CEX - 2525 x 130	25	130	25	15	35	2	ADET160304	SCR - CE x 4	
SPA0340	CEX - 2525 x 160	25	160	25	15	35	2			
SPA0342	CEX - 2525 x 200	25	200	25	15	35	2			
SPA0344	CEX - 2525 x 250	25	250	25	15	35	2			
SPA0346	CEX - 3025 x 150	30	150	25	15	45	2			
SPA0348	CEX - 3025 x 220	30	220	25	15	45	2			
SPA0350	CEX - 3232 x 150	32	150	32	15	45	3			
SPA0352	CEX - 3232 x 200	32	200	32	15	45	3			
SPA0354	CEX - 3232 x 250	32	250	32	15	45	3			
SPA0356	CEX - 3232 x 300	32	300	32	15	45	3			

※Hitachi inserts recommended
 ※建議使用Hitachi銑刀片

EndMill Systems

A007 CAP300R High-Speed Rough Endmill CAP300R型 快削型端銑刀

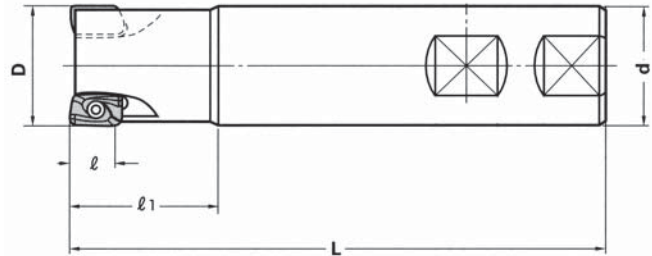


Code No. 型號	Type 規格	D	d	l1	l	L	Teeth 刃數	Insert 刀片規格	Screw 螺絲	Wrench 扳手
SPA0382	CAP300R - 1010 x 100	10	10	25	9	100	1	APMT 1135PDER	SCR - CAP2.5	T8
SPA0384	CAP300R - 1016 x 100	10	16	25	9	100	1			
SPA0386	CAP300R - 1212 x 100	12	12	25	9	100	1			
SPA0388	CAP300R - 1216 x 100	12	16	25	9	100	1			
SPA0390	CAP300R - 1616 x 120	16	16	25	9	120	2			
SPA0392	CAP300R - 1616 x 160	16	16	25	9	160	2			
SPA0394	CAP300R - 2020 x 120	20	20	30	9	120	2			
SPA0396	CAP300R - 2020 x 150	20	20	30	9	150	2			
SPA0398	CAP300R - 2020 x 200	20	20	30	9	200	2			
SPA0400	CAP300R - 2525 x 150	25	25	35	9	150	4			
SPA0402	CAP300R - 2525 x 200	25	25	35	9	200	4			

※Mitsubishi inserts recommended
※建議使用Mitsubishi銑刀片

A008 CAP400R High-Speed Rough Endmill

CAP400R型 快削型端銑刀



Code No. 型號	Type 規格	D	d	l1	l	L	Teeth 刃數	Insert 刀片規格	Screw 螺絲	Wrench 扳手
SPA0422	CAP400R - 2525 x 150	25	25	35	14	150	2	APMT 1604PDER	SCR - CAP4	T15
SPA0424	CAP400R - 2525 x 200	25	25	35	14	200	2			
SPA0426	CAP400R - 3025 x 150	30	25	45	14	150	2			
SPA0428	CAP400R - 3025 x 200	30	25	45	14	200	2			
SPA0430	CAP400R - 3232 x 150	32	32	45	14	150	3			
SPA0432	CAP400R - 3232 x 200	32	32	60	14	200	3			
SPA0434	CAP400R - 3232 x 250	32	32	60	14	250	3			
SPA0436	CAP400R - 3232 x 300	32	32	60	14	300	3			
SPA0438	CAP400R - 3232 x 350	32	32	60	14	350	3			
SPA0440	CAP400R - 3532 x 150	35	32	45	14	150	3			
SPA0442	CAP400R - 3532 x 200	35	32	45	14	200	3			
SPA0444	CAP400R - 3532 x 250	35	32	45	14	250	3			
SPA0446	CAP400R - 3532 x 300	35	32	45	14	300	3			
SPA0448	CAP400R - 3532 x 350	35	32	45	14	350	3			
SPA0450	CAP400R - 3532 x 400	35	32	45	14	400	3			
SPA0452	CAP400R - 4032 x 150	40	32	45	14	150	3			
SPA0454	CAP400R - 4032 x 200	40	32	45	14	200	3			
SPA0456	CAP400R - 5032 x 150	50	32	45	14	150	4			
SPA0458	CAP400R - 5042 x 150	50	42	45	14	150	4			

※Mitsubishi inserts recommended
 ※建議使用Mitsubishi銑刀片

A009 CAP400R Face Milling Cutter CAP400R型 平面銑刀

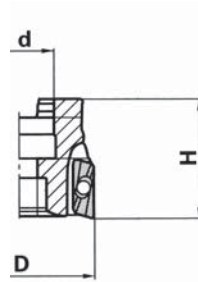


Fig.1

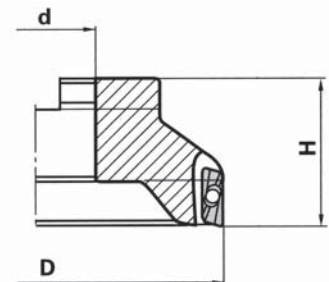
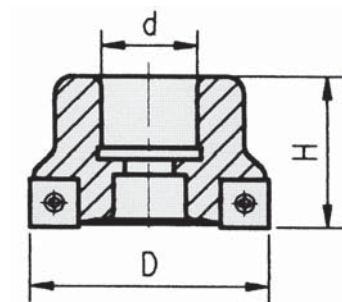


Fig.2

Code No. 型號	Type 規格	D	d	H	Teeth 刃數	Insert 刀片規格	Screw 螺絲	Wrench 扳手	Fig. 圖示
SPA0473	CAP400R - FM50	50	22	40	4	APMT1604	SCR-CAP4	T15	1
SPA0474	CAP400R - FM63	63	25.4	40	5				
SPA0475	CAP400R - FM63		22						
SPA0476	CAP400R - FM80	80	25.4	50	6				2
SPA0477	CAP400R - FM80		27						
SPA0478	CAP400R - FM100	100	31.75	50	7				
SPA0479	CAP400R - FM100		32						
SPA0480	CAP400R - FM125	125	38.1	50	8				
SPA0481	CAP400R - FM125		40						
SPA0482	CAP400R - FM160	160	38.1	50	10				
SPA0483	CAP400R - FM160		40						

※Metric ※Mitsubishi inserts recommended
 ※公制 ※建議使用Mitsubishi銑刀片

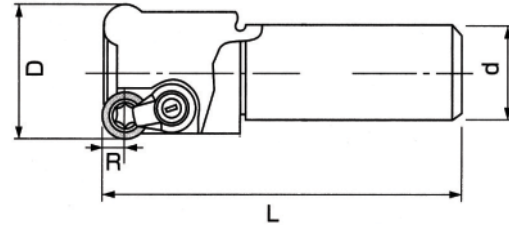
A010 SFM Shoulder Face Milling Cutter SFM型 直角平面銑刀



Code No. 型號	Type 規格	D	d	H	Teeth 刃數	Insert 刀片規格	Screw 螺絲	Wrench 扳手
SPA0503	SFM - 50	50	22	40	4	SPLT - 1204	SCR - SFM5	T20
SPA0504	SFM - 63	63	25.4	40	5			
SPA0505	SFM - 63		27					
SPA0506	SFM - 80	80	25.4	45	6			
SPA0507	SFM - 80		27					
SPA0508	SFM - 100	100	31.75	50	7			
SPA0509	SFM - 100		32					

※Metric ※ISO Code
 ※公制 ※符合ISO規範

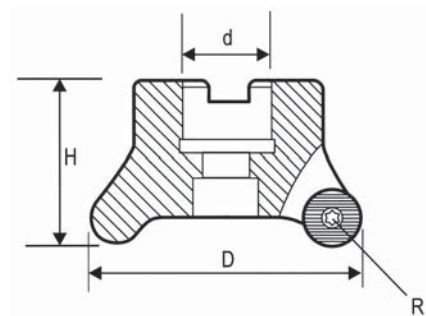
A011 CRC Radius Endmill CRC型 R角端銑刀



Code No. 型號	Type 規格	D	d	R	L	Teeth 刃數	Insert 刀片規格	Screw 螺絲	Wrench 扳手
SPA0532	CRC - 5R2520 x 150	25	20	5	150	2	RCKT10T3	SCR - CRC4	T15
SPA0534	CRC - 6R3225 x 200	32	25	6	200	2	RCKT1204		
SPA0536	CRC - 6R3225 x 250	32	25	6	250	2			

※Sandvik inserts recommended
※建議使用Sandvik銑刀片

A012 CRC Radius Face Milling Cutter CRC型 R角平面銑刀



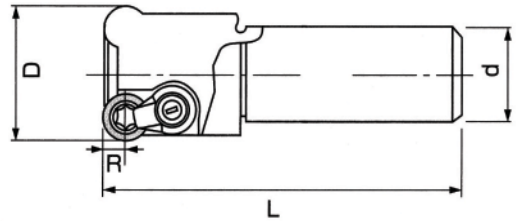
Code No. 型號	Type 規格	D	d	H	R	Teeth 刃數	Insert 刀片規格	Screw 螺絲	Wrench 扳手
SPA0562	CRC - 6R50	50	22	45	6	4	RCKT1204	SCR - CRC4	T15
SPA0564	CRC - 6R63	63	22	50	6	4			
SPA0566	CRC - 8R63	63	22	50	8	4	RCKT1606	SCR - CRC5	T20

※Sandvik inserts recommended
※建議使用Sandvik銑刀片

EndMill Systems

A013 CRS Radius Endmill CRS型 R角端銑刀

端銑刀及面銑刀系統



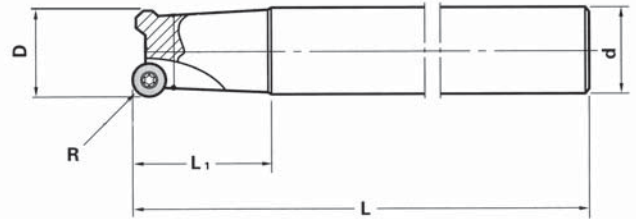
J-11

Code No. 型號	Type 規格	D	L	d	R	Teeth 刃數	Insert 刀片規格	Clamp 壓板	Screw 螺絲	Wrench 扳手
SPA0592	CRS - 4R12 x 120	12	120	12	4	1	RDMT0802	CL - 4R	SCR - CRS3	T8
SPA0594	CRS - 4R12 x 150	12	150	12	4	1				
SPA0596	CRS - 4R16 x 120	16	120	16	4	1/2				
SPA0598	CRS - 4R16 x 150	16	150	16	4	1/2				
SPA0600	CRS - 4R20 x 150	20	150	20	4	2				
SPA0602	CRS - 4R20 x 200	20	200	20	4	2				
SPA0604	CRS - 5R25 x 150	25	150	25	5	2	RDMT10T3	CL - 5R	SCR - CRS4	T15
SPA0606	CRS - 5R25 x 200	25	200	25	5	2				
SPA0608	CRS - 5R25 x 250	25	250	25	5	2				
SPA0610	CRS - 5R25 x 300	25	300	25	5	2				
SPA0612	CRS - 5R30 x 150	30	150	25	5	2				
SPA0614	CRS - 5R30 x 200	30	200	25	5	2				
SPA0616	CRS - 5R30 x 250	30	250	25	5	2				
SPA0618	CRS - 5R30 x 300	30	300	25	5	2				
SPA0620	CRS - 5R32 x 150	32	150	32	5	3				
SPA0622	CRS - 5R32 x 200	32	200	32	5	3				
SPA0624	CRS - 5R32 x 250	32	250	32	5	3				
SPA0626	CRS - 5R32 x 300	32	300	32	5	3				
SPA0628	CRS - 5R35 x 150	35	150	32	5	3				
SPA0630	CRS - 5R35 x 200	35	200	32	5	3				
SPA0632	CRS - 5R35 x 250	35	250	32	5	3				
SPA0634	CRS - 5R35 x 300	35	300	32	5	3				
SPA0636	CRS - 5R35 x 350	35	350	32	5	3				
SPA0638	CRS - 5R40 x 150	40	150	32	5	3				
SPA0640	CRS - 5R40 x 200	40	200	32	5	3				

※Hitachi inserts recommended
※建議使用Hitachi銑刀片

A014 CRP Radius Endmill

CRP型 R角端銑刀



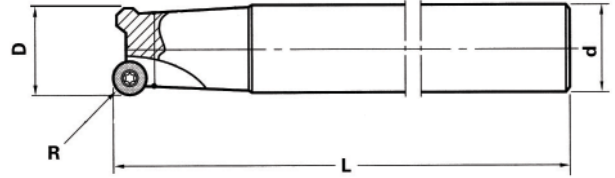
Code No. 型號	Type 規格	D	R	L	L1	d	Teeth 刃數	Insert 刀片規格	Screw 螺絲	Wrench 扳手
SPA0662	CRP - 4R16 x 150	16	4	150	40	16	2	RPMW - 0802MO	SCR - CRP3 SCR - W3 / 16S	T8
SPA0664	CRP - 4R20 x 150	20	4	150	40	20	2			
SPA0666	CRP - 4R20 x 200	20	4	200	60	20	2			
SPA0668	CRP - 5R25 x 150	25	5	150	40	25	2	RPMW - 1003MO	SCR - CRP4 SCR - W3 / 16S	T15
SPA0670	CRP - 5R25 x 200	25	5	200	60	25	2			
SPA0672	CRP - 5R25 x 250	25	5	250	60	25	2			
SPA0674	CRP - 5R25 x 300	25	5	300	60	25	2			
SPA0676	CRP - 5R30 x 150	30	5	150	45	25	2			
SPA0678	CRP - 5R30 x 200	30	5	200	45	25	2			
SPA0680	CRP - 5R30 x 250	30	5	250	45	25	2			
SPA0682	CRP - 5R30 x 300	30	5	300	45	25	2			
SPA0684	CRP - 5R35 x 150	35	5	150	45	32	3			
SPA0686	CRP - 5R35 x 200	35	5	200	45	32	3			
SPA0688	CRP - 5R35 x 250	35	5	250	45	32	3			
SPA0690	CRP - 5R35 x 300	35	5	300	45	32	3			
SPA0692	CRP - 5R40 x 150	40	5	150	45	32	3			
SPA0694	CRP - 5R40 x 200	40	5	200	45	32	3			
SPA0696	CRP - 5R40 x 250	40	5	250	45	32	3			
SPA0698	CRP - 6R35 x 150	35	6	150	45	32	3	RPMW - 1203MO	SCR - CRP4 SCR - W3 / 16S	T15
SPA0700	CRP - 6R35 x 200	35	6	200	45	32	3			
SPA0702	CRP - 6R35 x 250	35	6	250	45	32	3			
SPA0704	CRP - 6R40 x 150	40	6	150	45	32	3			
SPA0706	CRP - 6R40 x 200	40	6	200	45	32	3			
SPA0708	CRP - 6R40 x 250	40	6	250	45	32	3	RPMW - 1203MO	SCR - CRP4 SCR - W3 / 16S	T15
SPA0710	CRP - 6R50 x 150	50	6	150	45	32	4			
SPA0712	CRP - 6R50 x 200	50	6	200	45	32	4			

※Mitsubishi inserts recommended
 ※建議使用Mitsubishi銑刀片

EndMill Systems

A015 CRT Radius Endmill CRT型 R角端銑刀

端銑刀及面銑刀系統

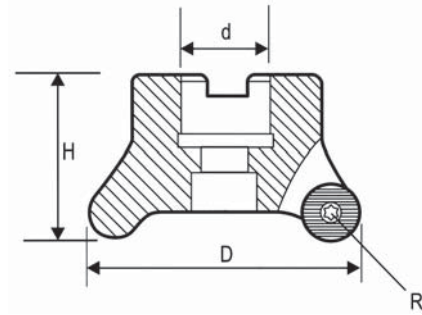


J-13

Code No. 型號	Type 規格	D	d	R	L	Teeth 刃數	Insert 刀片規格	Screw 螺絲	Wrench 扳手
SPA0732	CRT - 6R32 x 150	32	32	6	150	2	RPMT 1204MO	SCR - W3/16S SCR - CRT4	T15
SPA0734	CRT - 6R32 x 200	32	32	6	200	2			
SPA0736	CRT - 6R32 x 250	32	32	6	250	2			
SPA0738	CRT - 6R35 x 150	35	32	6	150	3			
SPA0740	CRT - 6R35 x 200	35	32	6	200	3			
SPA0742	CRT - 6R35 x 250	35	32	6	250	3			
SPA0744	CRT - 6R35 x 300	35	32	6	300	3			
SPA0746	CRT - 6R40 x 150	40	32	6	150	3			
SPA0748	CRT - 6R40 x 200	40	32	6	200	3			
SPA0750	CRT - 6R40 x 250	40	32	6	250	3			
SPA0752	CRT - 6R50 x 150	50	32	6	150	4			
SPA0754	CRT - 6R50 x 200	50	32	6	200	4			

※Mitsubishi inserts recommended
※建議使用Mitsubishi銑刀片

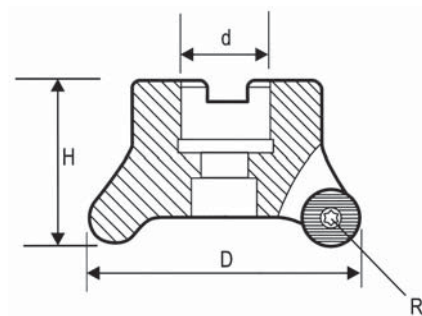
A016 CRS Radius Face Milling Cutter CRS型 R角平面銑刀



Code No. 型號	Type 規格	D	d	H	R	Teeth 刃數	Insert 刀片規格	Screw 螺絲	Clamp 壓板	Wrench 扳手
SPA0782	CRS - 5R50	50	25.4	45	5	4	RDMT10T3	SCR-CRS4	CL-5R	T15
SPA0783	CRS - 5R50		22							
SPA0784	CRS - 5R63	63	25.4	50	5	5				
SPA0785	CRS - 5R63		22							
SPA0786	CRS - 8R50	50	25.4	45	8	3				
SPA0787	CRS - 8R50		22							
SPA0788	CRS - 8R63	63	25.4	50	8	3/4				
SPA0789	CRS - 8R63		22							
SPA0790	CRS - 8R66	66	25.4	50	8	4	RDMT1604	SCR-CRS5	CL-8R	T20
SPA0791	CRS - 8R66		22							
SPA0792	CRS - 8R80	80	25.4	50	8	5				
SPA0793	CRS - 8R80		27							
SPA0794	CRS - 8R100	100	31.75	55	8	5				
SPA0795	CRS - 8R100		32							
SPA0796	CRS - 8R116	116	31.75	60	8	6				
SPA0797	CRS - 8R116		32							

※Metric ※Hitachi inserts recommended
※公制 ※建議使用Hitachi銑刀片

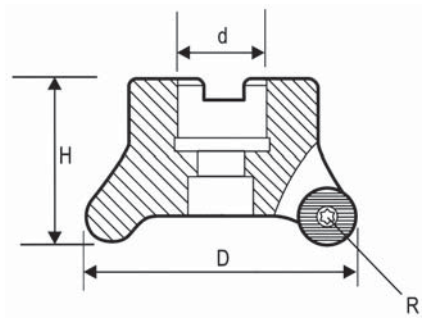
A017 CRP Radius Face Milling Cutter CRP型 R角平面銑刀



Code No. 型號	Type 規格	D	d	H	R	Teeth 刃數	Insert 刀片規格	Screw 螺絲	Wrench 扳手
SPA0822	CRP - 5R50	50	25.4	45	5	4	RPMW 1003MO	SCR - CRP4 SCR - W3 / 16S	T15
SPA0823	CRP - 5R50		22						
SPA0824	CRP - 5R63	63	25.4	50	5	5			
SPA0825	CRP - 5R63		22						
SPA0826	CRP - 6R50	50	25.4	45	6	4			
SPA0827	CRP - 6R50		22						
SPA0828	CRP - 6R63	63	25.4	50	6	5			
SPA0829	CRP - 6R63		22						

※Metric ※Mitsubishi inserts recommended
※公制 ※建議使用Mitsubishi銑刀片

A018 CRT Radius Face Milling Cutter CRT型 R角平面銑刀



Code No. 型號	Type 規格	D	d	H	R	Teeth 刃數	Insert 刀片規格	Screw 螺絲	Wrench 扳手
SPA0852	CRT - 6R50	50	25.4	45	6	4	RPMT 1204MO	SCR-CRT4 SCR-W3/ 16S	T15
SPA0853	CRT - 6R50		22						
SPA0854	CRT - 6R63	63	25.4	50					
SPA0855	CRT - 6R63		27						
SPA0856	CRT - 6R80	80	25.4	50					
SPA0857	CRT - 6R80		27						
SPA0858	CRT - 6R100	100	31.75	55					
SPA0859	CRT - 6R100		32						

※Metric ※Mitsubishi inserts recommended
※公制 ※建議使用Mitsubishi銑刀片

A019 IMP Ball-Nose Endmill IMP型 球型端銑刀

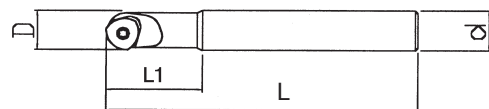


Fig. 1

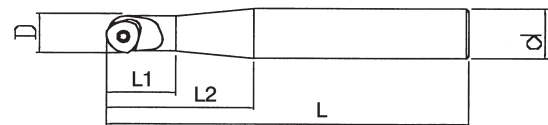
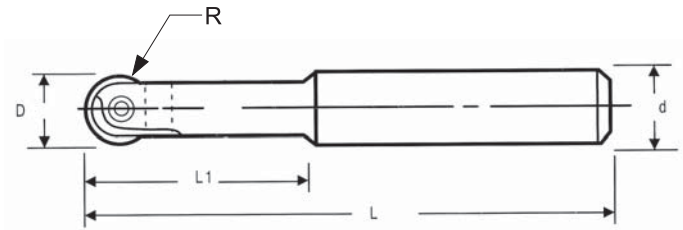


Fig. 2

Code No. 型號	Type 規格	D	L	L1	L2	d	Fig. 圖示	Insert 刀片規格	Screw 螺絲	Wrench 扳手
SPA0882	IMP - 6R12 x 150	12	150	30	-	12	1	QPHW120903EW- QPMT120903EN21	SCR - IMP3	T10
SPA0884	IMP - 6R16 x 160	12	160	60	49	16	2			
SPA0886	IMP - 8R16 x 160	16	160	30	-	16	1	QPHW1612J3EN- QPMT1612T3SN21	SCR - IMP4	T15
SPA0888	IMP - 8R16 x 200	16	200	30	-	16	1			
SPA0890	IMP - 8R20 x 200	16	200	70	63	20	2			
SPA0892	IMP - 10R20 x 170	20	170	35	-	20	1	QPHW201504EN- QPMT201504SN21		
SPA0894	IMP - 10R20 x 200	20	200	35	-	20	1			

※Imperial inserts recommended
※建議使用Imperial銑刀片

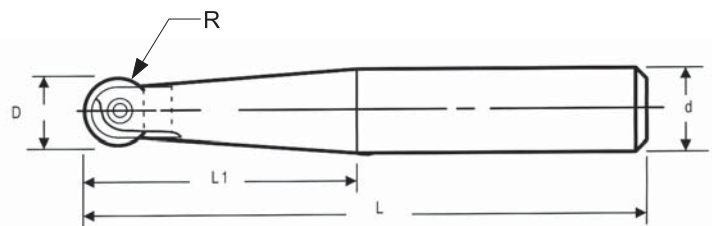
A020 C2139 Ball-Nose Endmill C2139 球型端銑刀



Code No. 型號	Type 規格	R	D	d	L	L1	Insert 刀片規格	Screw 螺絲	Wrench 扳手
SPA0922	C2139 - 4R8 x 130	4	8	8	130	30	P3200D08	SCR - CR4	T8
SPA0924	C2139 - 5R10 x 130	5	10	10	130	30	P3200D10	SCR - CR5	T15
SPA0926	C2139 - 5R12 x 130	5	10	12	130	30			
SPA0928	C2139 - 6R12 x 130	6	12	12	130	32	P3200D12	SCR - CR6	T20
SPA0930	C2139 - 8R16 x 150	8	16	16	150	36	P3200D16	SCR - CR8	
SPA0932	C2139 - 10R20 x 160	10	20	20	160	45	P3200D20	SCR - CR10	
SPA0934	C2139 - 10R20 x 200	10	20	20	200	45			
SPA0936	C2139 - 12.5R25 x 180	12.5	25	25	180	45	P3200D25	SCR - CR12.5	T30

※Walter inserts recommended
※建議使用Walter銑刀片

A021 C2139 Ball-Nose Endmill C2139 加長球型端銑刀

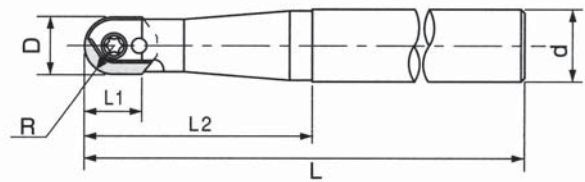


Code No. 型號	Type 規格	R	D	d	L	L1	Insert 刀片規格	Screw 螺絲	Wrench 扳手
SPA0962	C2139 - 4R12 x 140	4	8	12	140	45	P3200D08	SCR - CR4	T8
SPA0964	C2139 - 5R12 x 150	5	10	12	159	35	P3200D10	SCR - CR5	T15
SPA0966	C2139 - 6R16 x 160	6	12	16	160	58	P3200D12	SCR - CR6	T20
SPA0968	C2139 - 8R20 x 200	8	16	20	200	65	P3200D16	SCR - CR8	
SPA0970	C2139 - 10R25 x 200	10	20	25	200	76	P3200D20	SCR - CR10	
SPA0972	C2139 - 10R25 x 225	10	20	25	225	76			
SPA0974	C2139 - 10R25 x 250	10	20	25	250	76	P3200D25	SCR - CR12.5	T30
SPA0976	C2139 - 12.5R32 x 210	12.5	25	32	210	98			

※Walter inserts recommended
※建議使用Walter銑刀片

EndMill Systems

A022 CBP Ball-Nose Endmill CBP 球型端銑刀

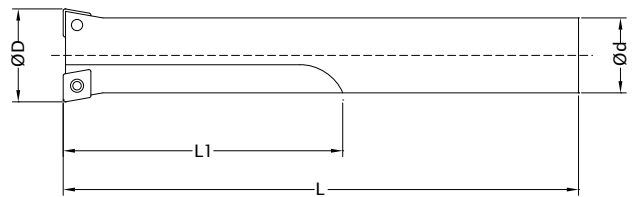


Code No. 型號	Type 規格	R	D	d	L	L1	L2	Insert 刀片規格	Screw(Front) 前螺絲	Screw(Rear) 後螺絲	Wrench 扳手
SPA1002	CBP - 8R16 x 130	8	16	16	130	13	40	ZPFW160	SCR - AR8	SCR - CBP3.5	T15
SPA1004	CBP - 8R20 x 130	8	16	20	130	13	50				
SPA1006	CBP - 8R20 x 160	8	16	20	160	13	65				
SPA1008	CBP - 10R20 x 140	10	20	20	140	17	40	ZPFW200	SCR - AR10	SCR - CBP5	T20
SPA1010	CBP - 10R25 x 180	10	20	25	180	17	80				
SPA1012	CBP - 10R25 x 250	10	20	25	250	17	80				
SPA1014	CBP - 12.5R25 x 150	12.5	25	25	150	22	45	ZPFW250	SCR - AR12.5	SCR - CBP5	
SPA1016	CBP - 12.5R32 x 200	12.5	25	32	200	22	90				
SPA1018	CBP - 12.5R32 x 300	12.5	25	32	300	22	90				

※Hitachi inserts recommended

※建議使用Hitachi銑刀片

A023 TB Twin-Blade Boring Bar TB 固定式雙刃粗搪刀桿



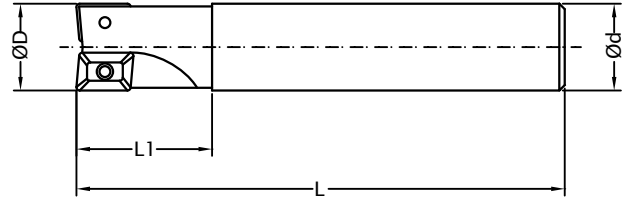
Code No. 型號	Type 規格	D	d	L1	L	Insert 刀片規格	Screw 螺絲	Wrench 扳手
SPA1042	TB - 1516.98	14.7	16	50	98	CCMT060204	SCR - TB2.5	T8
SPA1044	TB - 1516.120	14.7	16	50	120			
SPA1046	TB - 1616.98	15.7	16	50	98			
SPA1048	TB - 1620.120	15.7	20	50	120			
SPA1050	TB - 1716.98	16.7	16	50	98			
SPA1052	TB - 1816.98	17.7	16	50	98			
SPA1054	TB - 2016.110	19.7	16	60	110			
SPA1056	TB - 2016.150	19.7	16	60	150			
SPA1058	TB - 2216.110	21.7	16	60	110			
SPA1060	TB - 2316.110	22.7	16	60	110			
SPA1062	TB - 2420.120	23.7	20	70	120			
SPA1064	TB - 2520.120	24.7	20	70	120			
SPA1066	TB - 2525.170	24.7	25	70	170			
SPA1068	TB - 3025.160	30	25	90	160			
SPA1070	TB - 3025.190	30	25	90	190			
SPA1072	TB - 3525.160	35	25	90	160			
SPA1074	TB - 3532.230	35	32	90	230			
SPA1076	TB - 4025.160	40	25	90	160			
SPA1078	TB - 4035.250	40	35	90	250			

※ISO Code

※符合ISO規範

A024 XEM High Efficiency Rough Endmill

XEM 高效率快削型端銑刀

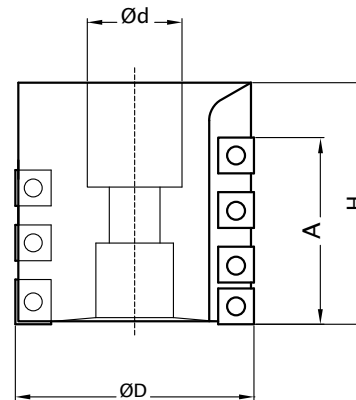


Code No. 型號	Type 規格	ØD	Ød	L1	L	Teeth 刃數	Insert 刀片規格	Screw 螺絲	Wrench 扳手
SPA1102	XEM10 - 1012.100	10	12	20	100	1	APMT1035	SCR - XEM2.5	T8
SPA1104	XEM10 - 1212.100	12	12	25	100	1			
SPA1106	XEM10 - 1416.80	14	16	25	80	1			
SPA1108	XEM10 - 1616.100	16	16	25	100	2			
SPA1110	XEM10 - 1816.90	18	16	25	90	2			
SPA1112	XEM10 - 2020.110	20	20	30	110	3			
SPA1114	XEM10 - 2020.150	20	20	50	150	3			
SPA1116	XEM10 - 2525.120	25	25	35	120	4			
SPA1118	XEM10 - 2525.150	25	25	60	150	4	APMT1605	SCR - XEM4	T15
SPA1120	XEM16 - 2525.120	25	25	35	120	2			
SPA1122	XEM16 - 2525.150	25	25	60	150	2			
SPA1124	XEM16 - 3232.120	32	32	35	120	3			
SPA1126	XEM16 - 3232.150	32	32	80	150	3			
SPA1128	XEM16 - 4032.125	40	32	40	125	4			
SPA1130	XEM16 - 4032.200	40	32	100	200	4			
SPA1132	XEM16 - 5032.125	50	32	40	125	5			

※Nachi or Sumitomo inserts recommended
 ※建議使用Nachi或Sumitomo銑刀片

A025 RGH Shell-Type Rough Milling Cutter

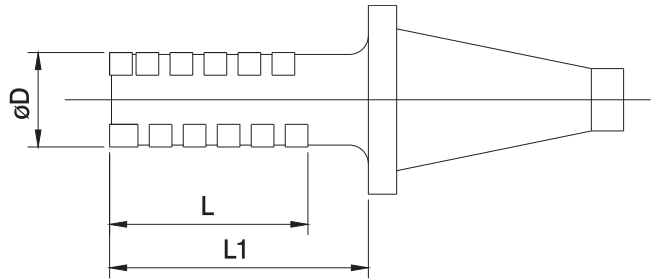
RGH 粗重切削筒狀銑刀



Code No. 型號	Type 規格	ØD	A	H	Ød	Flute 槽數	Insert 刀片規格	Pcs 數量	Insert 刀片規格	Pcs 數量	Screw 螺絲	Wrench 扳手
SPA1152	RGH - 80 x 31.75	80	67	80	31.75	6	LPMT - 1504	3	SPMT - 1204	18	SCR - RGH5	T20
SPA1154	RGH - 80 x 32	80	67	80	32							

※Walter inserts recommended
 ※建議使用Walter銑刀片

A026 RGH BT50/NT50 Rough Milling Cutter 一體式粗重銑刀



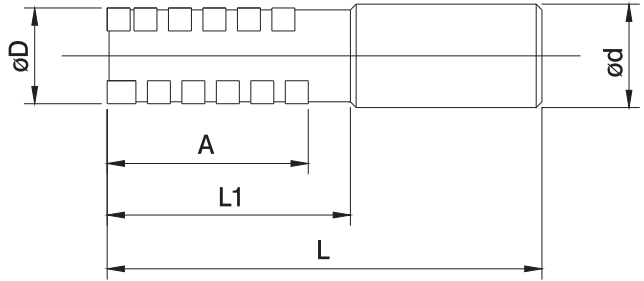
J-19

Code No. 型號	Type 規格	Shank 刀把規格	ØD	L	L1	Flute 槽數	Insert 刀片規格	Pcs 數量	Insert 刀片規格	Pcs 數量		
SPA1172	BT50 - RGH50.77	BT50	50	77	117	4	LPMT 1504	2	SPMT 1204	14		
SPA1174	BT50 - RGH50.97		50	97	137					18		
SPA1176	BT50 - RGH50.127		50	127	167					24		
SPA1178	BT50 - RGH50.157		50	157	197					30		
SPA1180	BT50 - RGH63.67		63	67	107					12		
SPA1182	BT50 - RGH63.87		63	87	127					16		
SPA1184	BT50 - RGH63.107		63	107	147					20		
SPA1186	BT50 - RGH63.158		63	158	198					30		
SPA1188	BT50 - RGH80.107		80	107	147					6	3	30
SPA1190	BT50 - RGH100.107		100	107	147					8	4	40
SPA1192	NT50 - RGH50.77	NT50	50	77	117	4	LPMT 1504	SPMT 1204	14			
SPA1194	NT50 - RGH50.97		50	97	137				18			
SPA1196	NT50 - RGH50.127		50	127	167				24			
SPA1198	NT50 - RGH50.157		50	157	197				30			
SPA1200	NT50 - RGH63.67		63	67	107				12			
SPA1202	NT50 - RGH63.87		63	87	127				16			
SPA1204	NT50 - RGH63.107		63	107	147				20			
SPA1206	NT50 - RGH63.158		63	158	198				30			
SPA1208	NT50 - RGH80.107		80	107	147				6	3	30	
SPA1210	NT50 - RGH100.107		100	107	147				8	4	40	

Screw 螺絲	Wrench 扳手
SCR - RGH5	WRN - T20

※Walter inserts recommended
※建議使用Walter銑刀片

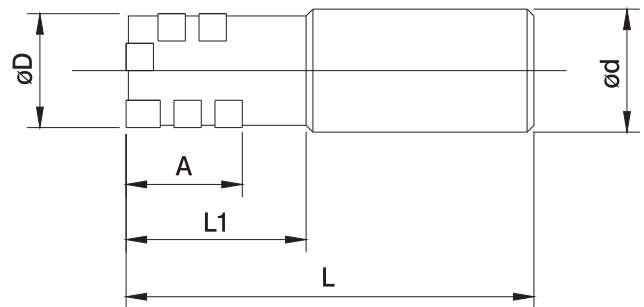
A027 RGH Rough Milling Cutter RGH 粗切削端銑刀



Code No. 型號	Type 規格	ØD	Ød	A	L1	L	Flute 槽數	Insert 刀片規格	Pcs 數量	Insert 刀片規格	Pcs 數量	Screw 螺絲	Wrench 扳手
SPA1232	RGH - 2527 x 120	25	25	27	50	120	2	LPMW0703	1	SPNT0603	5	SCR - RGH2.5	T8
SPA1234	RGH - 3042 x 150	30	32	42	70	150	2	LPMT 15T308	1	SDNT 090308	5	SCR - RGH4	T15
SPA1236	RGH - 3242 x 150	32	32	42	70	150	2		1		5		
SPA1238	RGH - 4050 x 155	40	32	50	75	155	4		2		12		
SPA1240	RGH - 4056 x 175	40	42	56	90	175	2	LPMT 1504	1	SPMT 1204	5	SCR - RGH5	T20
SPA1242	RGH - 5077 x 205	50	50.8	77	115	205	4		2		14		
SPA1244	RGH - 5097 x 225	50	50.8	97	135	225	4		2		18		
SPA1246	RGH - 50127 x 225	50	50.8	127	165	255	4		2		24		
SPA1248	RGH - 50157 x 285	50	50.8	157	195	285	4		2		30		

※Walter inserts recommended
※建議使用Walter銑刀片

A028 RGZ Vertical Rough Milling Cutter RGZ 鑽銑共用粗銑刀



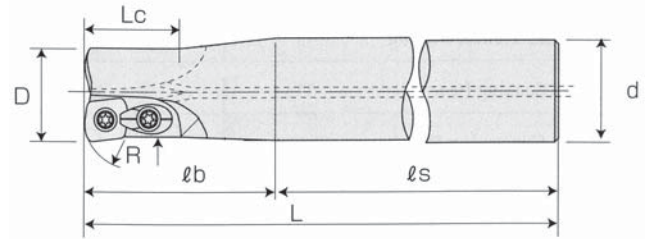
Code No. 型號	Type 規格	ØD	Ød	A	L1	L	Flute 槽數	Insert 刀片規格	Pcs 數量	Insert 刀片規格	Pcs 數量	Screw 螺絲	Wrench 扳手
SPA1272	RGZ - 3042 x 150	30	32	42	70	150	2	LPMT 15T308	1	SDNT 090308	5	SCR - RGZ4	T15
SPA1274	RGZ - 3242 x 150	32	32	42	70	150	2		1		5	SCR - RGZ5	T20
SPA1276	RGZ - 4056 x 155	40	32	56	80	155	2		1		5		

※Walter inserts recommended
※建議使用Walter銑刀片

EndMill Systems

A029 ESR High-Efficiency Endmill ESR 高效率切削端銑刀

端銑刀及面銑刀系統



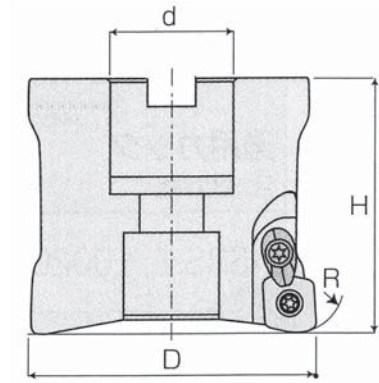
J-21

Code No. 型號	Type 規格	D	L	R	lb	ls	Lc	d	Teeth 刃數	Insert 刀片規格	Screw 螺絲	Clamp 壓板	Wrench 扳手
SPA1302	ESR - 2020 x 130	20	130	10	50	80	20	20	2	EPNW 0803TN - 10	SCR - ESR3.5	CL - ESR3.5	T15
SPA1304	ESR - 2020 x 180	20	180	10	100	80	20	20					
SPA1306	ESR - 2020 x 250	20	250	10	130	120	20	20					
SPA1308	ESR - 2525 x 140	25	140	10	60	80	25	25	2	EPNW 10T3TN - 10	SCR - ESR4	CL - ESR3.5	T15
SPA1310	ESR - 2525 x 200	25	200	10	120	80	25	25					
SPA1312	ESR - 2525 x 300	25	300	10	180	120	25	25					
SPA1314	ESR - 3032 x 150	30	150	15	70	80	29	32	2	EDNW 13T4TN - 15 EDNW 13T4TN - 10	SCR - ESR5	CL - ESR5	T20
SPA1316	ESR - 3032 x 200	30	200	15	120	80	29	32					
SPA1318	ESR - 3032 x 300	30	300	15	180	120	29	32					
SPA1320	ESR - 3232 x 150	32	150	15	70	80	29	32					
SPA1322	ESR - 3232 x 200	32	200	15	120	80	29	32					
SPA1324	ESR - 3232 x 300	32	300	15	180	120	29	32					
SPA1326	ESR - 3532 x 150	35	150	15	50	100	-	32					
SPA1328	ESR - 3532 x 200	35	200	15	50	150	-	32					
SPA1330	ESR - 3532 x 250	35	250	15	50	200	-	32					
SPA1332	ESR - 3532 x 300	35	300	15	50	250	-	32					
SPA1334	ESR - 3532 x 350	35	350	15	50	300	-	32					
SPA1336	ESR - 4042 x 150	40	150	15	50	100	40	42					
SPA1338	ESR - 4042 x 250	40	250	15	50	200	40	42					
SPA1340	ESR - 4042 x 300	40	300	15	50	250	40	42					
SPA1342	ESR - 5042 x 250	50	250	15	50	200	50	42					
SPA1344	ESR - 6342 x 250	63	250	15	50	200	50	42					
									4	EDNW15T4TN-15 EDNW15T4TN-10			

※Hitachi inserts recommended
※建議使用Hitachi銑刀片

A030 ESR High-Efficiency Milling Cutter

ESR 高效率切削平面銑刀

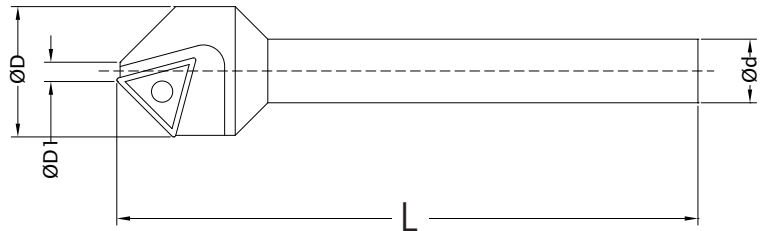


Code No. 型號	Type 規格	D	H	R	d	Teeth 刃數	Insert 刀片規格	Screw 螺絲	Clamp 壓板	Wrench 扳手
SPA1362	ESR - 50	50	50	15 (10)	22	3	EDNW13T4TN - 15 EDNW13T4TN - 10	SCR - ESR5	CL - ESR5	T20
SPA1364	ESR - 63	63	50	15 (10)	25.4	4	EDNW15T4TN - 15 EDNW15T4TN - 10			
SPA1366	ESR - 66	66	50	15 (10)	25.4	4				
SPA1368	ESR - 80	80	70	15 (10)	25.4	5				
SPA1370	ESR - 100	100	70	15 (10)	31.75	6				

※Hitachi inserts recommended
※建議使用Hitachi銑刀片

A031 TCM 45° Chamfering Endmill

TCM 45°倒角刀

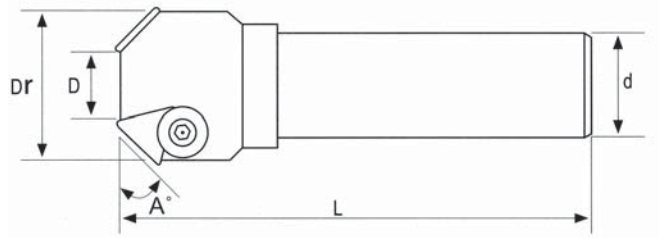


Code No. 型號	Type 規格	ØD	ØD1	Ød	L	Insert 刀片規格	Screw 螺絲	Wrench 扳手
SPA1392	TCM - 03 - 25	25	3	12	110	TCMT16T304	SCR - TCM4	T15

※ISO Code
※符合ISO規範

EndMill Systems

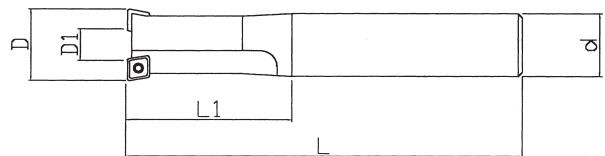
A032 CM 45° Chamfering Endmill CM 45°倒角刀



Code No. 型號	Type 規格	A°	D	Dr	d	L	Teeth 刃數	Insert 刀片規格	Screw 螺絲	Wrench 扳手
SPA1402	CM45 - 0521 x 16	45	5	21	16	120	1	TPUN1603	SCR - W1 / 4	WRN - M4L
SPA1404	CM45 - 1031 x 20	45	10	31	20	120	2			
SPA1406	CM45 - 2050 x 25	45	20	50	25	130	3	TPUN2204	SCR - W5 / 16	WRN - M5L
SPA1408	CM45 - 0632 x 32	45	6	32	32	150	1			
SPA1410	CM45 - 2050 x 32	45	20	50	32	150	3			
SPA1412	CM45 - 3563 x 25	45	35	63	25	150	3			
SPA1414	CM45 - 3563 x 32	45	35	63	32	150	3			

※ISO Code
※符合ISO規範

A033 CH Bolt Countersink Endmill CH 螺絲頭沈孔銑刀

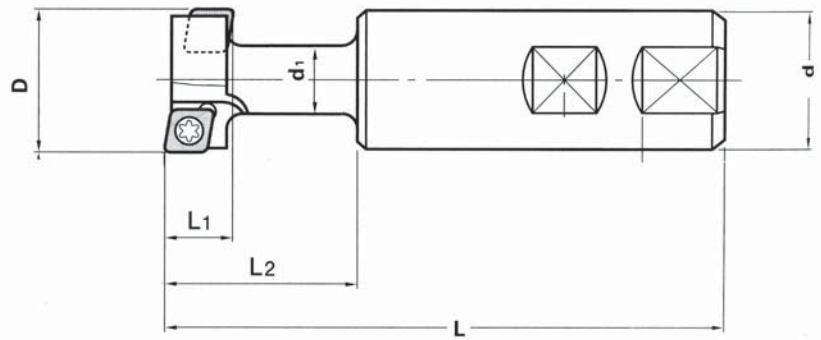


Code No. 型號	Type 規格	D	L	L1	D1	d	Teeth 刃數	Insert 刀片規格	Screw 螺絲	Wrench 扳手
SPA1432	CH - 8 - 14 - 25	14	108	21	2.9	25	1	CCMT 060204	SCR - CJU2.5	T8
SPA1434	CH - 10 - 17.5 - 25	17.5	115	26	5.3	25	2			
SPA1436	CH - 12 - 20 - 25	20	120	30	7.8	25	2			
SPA1438	CH - 14 - 23 - 25	23	126	34.5	10.8	25	2	CPMT 090308	SCR - CJU3.5	T15
SPA1440	CH - 16 - 26 - 32	26	132	39	8.5	32	2			
SPA1442	CH - 18 - 29 - 32	29	138	43.5	11.5	32	2			
SPA1444	CH - 20 - 32 - 32	32	144	59	14.5	32	2			

※Hitachi inserts recommended ※ISO Code
※建議使用Hitachi銑刀片 ※符合ISO規範

A034 TS T-Slot Endmill

TS T型槽端銑刀

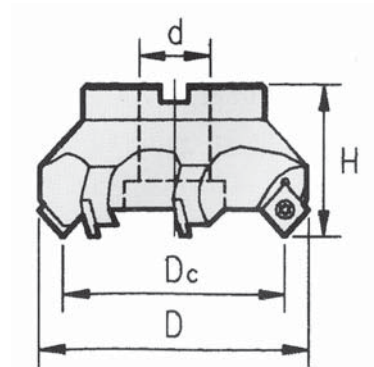


Code No. 型號	Type 規格	D	L1	d	d1	L2	L	Teeth 刃數	Insert 刀片規格	Screw 螺絲	Wrench 扳手
SPA1462	TS - 24 - 11 - 20	24	11	20	12	29	90	4	CCMT - 060204	SCR - TS2.5	T8
SPA1464	TS - 31 - 14 - 25	31	14	25	15	42	110	4	CPMT - 080204Z		
SPA1466	TS - 39 - 18 - 32	39	18	32	19	49	120	4	CPMT - 090308	SCR - TS4	T15
SPA1468	TS - 49 - 22 - 32	49	22	32	25	60	140	4	CPMT - 120408	SCR - TS5	T20

※ISO Code
※符合ISO規範

A035 SE High-Speed Face Milling Cutter

SE 45° 高速平面殼型銑刀

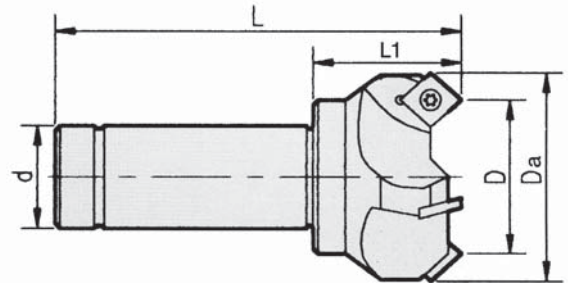


Code No. 型號	Type 規格	Dc	D	d	H	Teeth 刃數	Insert 刀片規格	Screw 螺絲	Wrench 扳手
SPA1492	SE - 50 x 4T	50	60	1"	45	4	SEKT1204	SCR - SE5	T20
SPA1493	SE - 50 x 4T			22					
SPA1494	SE - 63 x 5T	63	75	1"	50	5			
SPA1495	SE - 63 x 5T			22					
SPA1496	SE - 80 x 6T	80	96	1"	55	6			
SPA1497	SE - 80 x 6T			27					
SPA1498	SE - 100 x 6T	100	116	1-1 / 4"	55	6			
SPA1499	SE - 100 x 6T			32					
SPA1500	SE - 125 x 8T	125	141	1-1 / 2"	60	8			
SPA1501	SE - 125 x 8T			40					
SPA1502	SE - 150 x 8T	150	158	2"	60	8			
SPA1503	SE - 150 x 8T			60					
SPA1504	SE - 200 x 12T	200	212	1 - 7 / 8"	60	12			
SPA1505	SE - 200 x 12T			60					

※Metric ※ISO Code
※公制 ※符合ISO規範

EndMill Systems

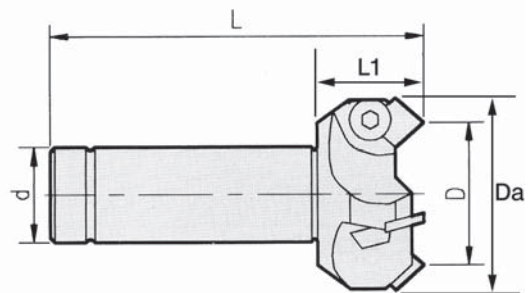
A036 SE High-Speed Face Milling Cutter SE 45° 高速銑刀



Code No. 型號	Type 規格	D	Da	d	L	L1	Teeth 刃數	Insert 刀片規格	Screw 螺絲	Wrench 扳手
SPA1522	SE - 5032 x 150	50	62	32	150	45	4	SEKT1204	SCR - SE5	T20
SPA1524	SE - 5025 x 120	50	62	25	120	45	4			
SPA1526	SE - 6332 x 150	63	74	32	150	45	5			
SPA1528	SE - 6325 x 120	63	74	25	120	45	5			

※ISO Code
※符合ISO規範

A037 SE445 Face Milling Cutter SE445型 高速平面銑刀

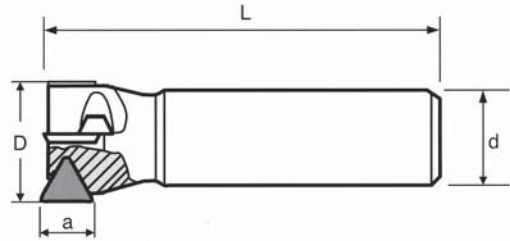


Code No. 型號	Type 規格	D	Da	d	L	L1	Teeth 刃數	Insert 刀片規格	Screw 螺絲	Wrench 扳手
SPA1552	SE445 - 50 x 150	50	62	32 / 25	150	45	3	SEKN1203	SCR - W1 / 4L	WRN - M4T
SPA1554	SE445 - 63 x 150	63	74	32 / 25	150	45	4			

※ISO Code
※符合ISO規範

A038 TPR Shoulder Endmill

TPR 直角端銑刀

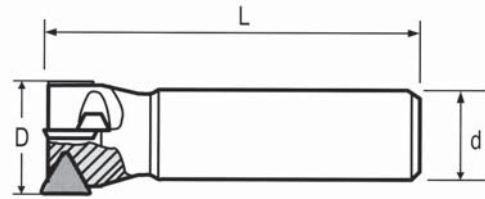


Code No. 型號	Type 規格	D	d	L	a	Teeth 刃數	Insert 刀片規格	Screw 螺絲	Wrench 扳手
SPA1572	TPR - 1616 x 110	16	16	110	11	1	TPMN110308	SCR - W3 / 16	WRN - M3L
SPA1574	TPR - 2020 x 110S	20	20	110	11	2	TPMN110208		
SPA1576	TPR - 2020 x 110	20	20	110	11	2	TPMN110308		
SPA1578	TPR - 2520 x 110S	25	20	110	11	2	TPMN110208		
SPA1580	TPR - 2525 x 110	25	25	110	11	2	TPMN110308		
SPA1582	TPR - 3020 x 130	30	20	130	16	2	TPMN160308	SCR - W1 / 4	WRN - M4L
SPA1584	TPR - 3025 x 130	30	25	130	16	2			
SPA1586	TPR - 3220 x 130	32	20	130	16	2			
SPA1588	TPR - 3225 x 130	32	25	130	16	2			
SPA1590	TPR - 3232 x 150	32	32	150	16	2			
SPA1592	TPR - 3520 x 130	35	20	130	16	2			
SPA1594	TPR - 3525 x 130	35	25	130	16	2			
SPA1596	TPR - 3532 x 150	35	32	150	16	2			
SPA1598	TPR - 3532 x 200	35	32	200	16	2			
SPA1600	TPR - 3532 x 250	35	32	250	16	2			
SPA1602	TPR - 3532 x 300	35	32	300	16	2			
SPA1604	TPR - 3532 x 350	35	32	350	16	2			
SPA1606	TPR - 4020 x 130	40	20	130	16	3			
SPA1608	TPR - 4025 x 130	40	25	130	16	3			
SPA1610	TPR - 4032 x 150	40	32	150	16	3			
SPA1612	TPR - 4032 x 200	40	32	200	16	3			
SPA1614	TPR - 4032 x 250	40	32	250	16	3			
SPA1616	TPR - 4032 x 300	40	32	300	16	3			
SPA1618	TPR - 4032 x 350	40	32	350	16	3			
SPA1620	TPR - 4520 x 130	45	20	130	16	3			
SPA1622	TPR - 4525 x 130	45	25	130	16	3			
SPA1624	TPR - 4532 x 150	45	32	150	16	3			
SPA1626	TPR - 5020 x 130	50	20	130	16	3			
SPA1628	TPR - 5025 x 130	50	25	130	16	3			
SPA1630	TPR - 5032 x 150	50	32	150	16	3			
SPA1632	TPR - 5032 x 200	50	32	200	16	3			
SPA1634	TPR - 5032 x 250	50	32	250	16	3			
SPA1636	TPR - 5032 x 300	50	32	300	16	3			
SPA1638	TPR - 6332 x 150	63	32	150	16	4			
SPA1640	TPR - 6332 x 200	63	32	200	16	4			
SPA1642	TPR - 6332 x 250	63	32	250	16	4			
SPA1644	TPR - 6332 x 300	63	32	300	16	4			

※ISO Code
※符合ISO規範

EndMill Systems

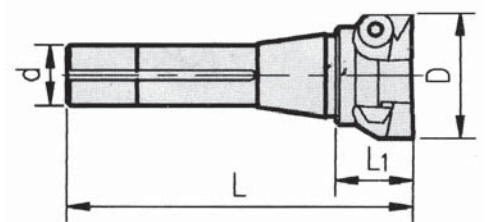
A039 TPR22 Shoulder Endmill TPR22 直角端銑刀



Code No. 型號	Type 規格	D	d	L	Teeth 刃數	Insert 刀片規格	Screw 螺絲	Wrench 扳手
SPA1662	TPR22 - 5032 x 150	50	32	150	3	TPMN2204 TPKN2204PPR	SCR-W5/16	WRE-M5L
SPA1664	TPR22 - 5042 x 150	50	42	150	3			
SPA1666	TPR22 - 5042 x 200	50	42	200	3			
SPA1668	TPR22 - 6332 x 150	63	32	150	3			
SPA1670	TPR22 - 6332 x 200	63	32	200	3			
SPA1672	TPR22 - 6332 x 250	63	32	250	3			
SPA1674	TPR22 - 6332 x 300	63	32	300	3			
SPA1676	TPR22 - 6342 x 150	63	42	150	3			
SPA1678	TPR22 - 6342 x 200	63	42	200	3			
SPA1680	TPR22 - 6342 x 250	63	42	250	3			
SPA1682	TPR22 - 6342 x 300	63	42	300	3			

※ISO Code
※符合ISO規範

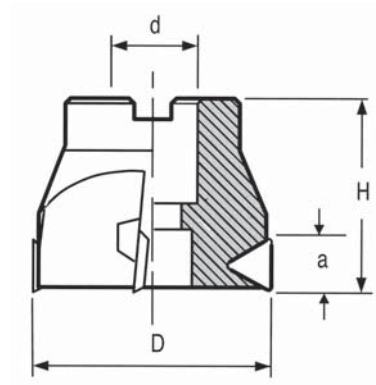
A040 TPR R8-Shank Shoulder Endmill TPR R8柄直角端銑刀



Code No. 型號	Type 規格	D	L	L1	d	Teeth 刃數	Insert 刀片規格	Screw 螺絲	Wrench 扳手
SPA1702	TPR - R8 x 1"	1"	145	45	24	2	TPMN1103	SCR - W3 / 16	WRN - M3L
SPA1704	TPR - R8 x 1 - 1 / 4"	1 - 1 / 4"	145	45	24	2	TPMN1603	SCR - W1 / 4	WRN - M4L
SPA1706	TPR - R8 x 1 - 1 / 2"	1 - 1 / 2"	145	45	24	3			
SPA1708	TPR - R8 x 1 - 3 / 4"	1 - 3 / 4"	145	45	24	3			
SPA1710	TPR - R8 x 2"	2"	145	45	24	3			
SPA1712	TPR - R8 x 2 - 1 / 2"	2 - 1 / 2"	145	45	24	4			
SPA1714	TPR - R8 x 3"	3"	145	45	24	5			

※ISO Code
※符合ISO規範

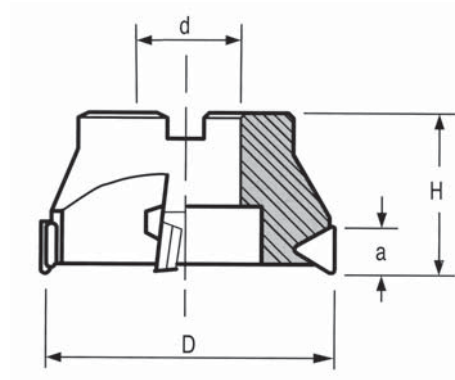
A041 TPR Shoulder Face Milling Cutter TPR 直角平面銑刀



Code No. 型號	Type 規格	D	d	H	a	Teeth 刃數	Insert 刀片規格	Screw 螺絲	Wrench 扳手
SPA1732	TPR - 50W / S	50	22	50	16	3	TPMN1603	SCR - W1 / 4	WRN - M4L
SPA1734	TPR - 63W / S	63	25.4	50	16	4			

※ISO Code
※符合ISO規範

A042 TPR Shoulder Face Milling Cutter TPR 直角平面銑刀

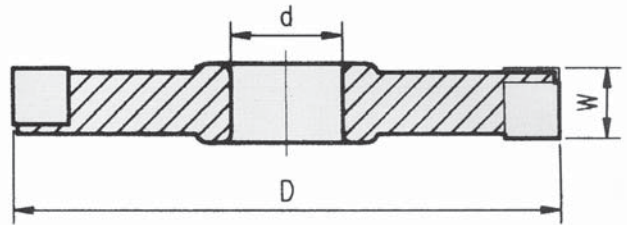


Code No. 型號	Type 規格	D	d	H	a	Teeth 刃數	Insert 刀片規格	Shim 墊片	Clamp Screw 壓板螺絲	Wrench 扳手	Screw 螺絲
SPA1752	TPR - 63	63	25.4	50	22	3	TPMN2204 TPKN2204PPR	ST - T	SCR - W5 / 16	WRN - M5L	SCR - ST - T4
SPA1754	TPR - 3	80	25.4	50	22	4					
SPA1756	TPR - 4	100	31.75	55	22	5					
SPA1758	TPR - 5	125	38.1	60	22	6					
SPA1760	TPR - 6	160	50.8	60	22	7					
SPA1762	TPR - 8	200	47.625	60	22	8					
SPA1764	TPR - 10	250	47.625	60	22	9					
SPA1766	TPR - 12	300	47.625	60	22	10					

※ISO Code
※符合ISO規範

EndMill Systems

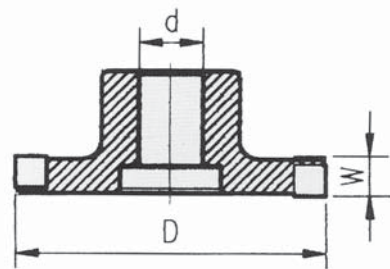
A043 SC Side Milling Cutter SC 千鳥型倒銑刀



Code No. 型號	Type 規格	D	d	W	Teeth 刃數	Insert 刀片規格	Clamp 壓板	Screw 螺絲	Wrench 扳手
SPA1792	SC - 100 x 16	100	1"	16	10	SPUN 120304	CL - S CL - SL	SCR - CL5 / 16	WRN - M4T
SPA1794	SC - 125 x 16	125	1"	16	14				
SPA1796	SC - 150 x 16	150	1"	16	16				
SPA1798	SC - 200 x 16	200	1"	16	20				

※ISO Code
※符合ISO規範

A044 SCT T-Type Side Milling Cutter SCT T型側銑刀

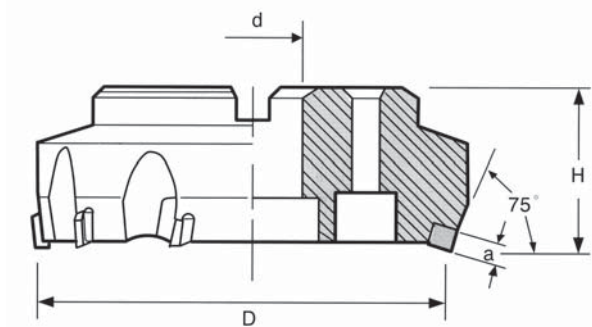


Code No. 型號	Type 規格	D	d	W	Teeth 刃數	Insert 刀片規格	Clamp 壓板	Screw 螺絲	Wrench 扳手
SPA1822	SCT - 100 x 16	100	1"	16	10	SPUN-1203	CL - S CL - SL	SCR - CL5 / 16	WRN - M4T
SPA1824	SCT - 125 x 16	125	1 - 1 / 4"	16	14				
SPA1826	SCT - 125 x 20	125	1 - 1 / 4"	20	14	SPUN-1504			
SPA1828	SCT - 150 x 16	150	1 - 1 / 4"	16	16	SPUN-1203			
SPA1830	SCT - 150 x 20	150	1 - 1 / 4"	20	16	SPUN-1504			
SPA1832	SCT - 200 x 20	200	1 - 1 / 4"	20	20				
SPA1834	SCT - 200 x 25	200	1 - 1 / 4"	25	20				

※ISO Code
※符合ISO規範

A045 FP 15° Face Milling Cutter

FP 15°平面銑刀



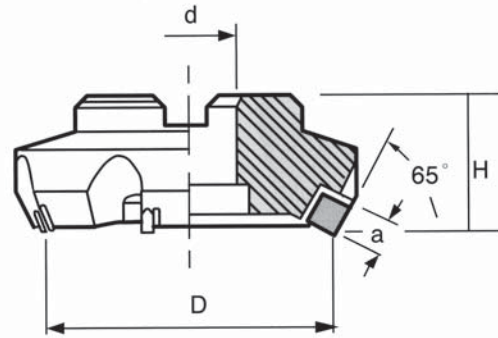
Code No. 型號	Type 規格	D	d	H	a	Teeth 刃數
SPA1852	FP - 3	80	25.4	50	12	5
SPA1854	FP - 4	100	31.75	55	12	6
SPA1856	FP - 5	125	38.1	60	12	8
SPA1858	FP - 6	160	50.8	60	12	10
SPA1860	FP - 8	200	47.625	60	12	12
SPA1862	FP - 10	250	47.625	60	12	16
SPA1864	FP - 12	300	47.625	60	12	20

Insert 刀片規格	Clamp Screw 壓板螺絲	Clamp 壓板	Shim Screw 墊片螺絲	Shim 墊片	Wrench 扳手
SPUN - 120308 SPKN -1203EDR 	SCR- CL5 / 16	CL -S	SCR- ST - S4	ST - S	WRN- M4T

※ISO Code
※符合ISO規範

A046.A047 535,435 25° Face Milling Cutter

535,435 25°平面銑刀



Code No. 型號	Type 規格	D	d	H	a	Teeth 刃數
SPA1882	535 - 3	80	25.4	50	15	5
SPA1884	535 - 4	100	31.75	55	15	5
SPA1886	535 - 5	125	38.1	60	15	6
SPA1888	535 - 6	160	50.8	60	15	8
SPA1890	535 - 8	200	47.625	60	15	10
SPA1892	535 - 10	250	47.625	60	15	12
SPA1894	535 - 12	300	47.625	60	15	14

Code No. 型號	Type 規格	D	d	H	a	Teeth 刃數
SPA1912	435 - 3	80	25.4	50	12	6/5
SPA1914	435 - 4	100	31.75	55	12	8/5
SPA1916	435 - 5	125	38.1	60	12	10/6
SPA1918	435 - 6	160	50.8	60	12	12/8
SPA1920	435 - 8	200	47.625	60	12	14/10
SPA1922	435 - 10	250	47.625	60	12	16/12
SPA1924	435 - 12	300	47.625	60	12	20/14

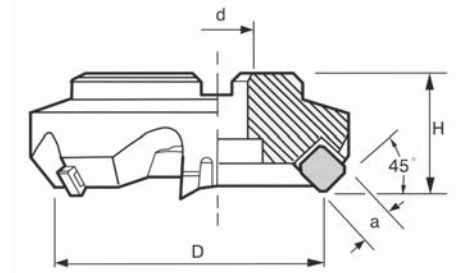
Clamp Screw 壓板螺絲	Clamp 壓板	Shim Screw 墊片螺絲	Shim 墊片	Wrench 扳手
SCR -CL5 / 16	CL -S	SCR -ST - S4	ST - S	WRN -M4T

Insert for 535 刀片規格		Insert for 435 刀片規格	
SPKN 1504 		SPKN 1204 	

※ISO Code
※符合ISO規範

EndMill Systems

A048.A049 545,445 45° Face Milling Cutter 545,445 45°平面銑刀



端銑刀及面銑刀系統



J-31

Code No. 型號	Type 規格	D	d	H	a	Teeth 刃數
SPA1942	545 - 3	80	25.4	50	15	5
SPA1944	545 - 4	100	31.75	55	15	5
SPA1946	545 - 5	125	38.1	60	15	6
SPA1948	545 - 6	160	50.8	60	15	8
SPA1950	545 - 8	200	47.625	60	15	10
SPA1952	545 - 10	250	47.625	60	15	12
SPA1954	545 - 12	300	47.625	60	15	14

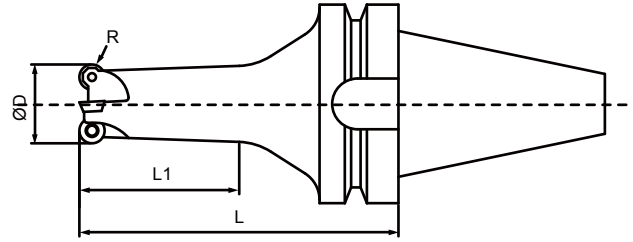
Code No. 型號	Type 規格	D	d	H	a	Teeth 刃數
SPA1972	445 - 3	80	25.4	50	12	5
SPA1974	445 - 4	100	31.75	55	12	5
SPA1976	445 - 5	125	38.1	60	12	6
SPA1978	445 - 6	160	50.8	60	12	8
SPA1980	445 - 8	200	47.625	60	12	10
SPA1982	445 - 10	250	47.625	60	12	12
SPA1984	445 - 12	300	47.625	60	12	14

Clamp Screw 壓板螺絲	Clamp 壓板	Shim Screw 墊片螺絲	Shim 墊片	Wrench 扳手
SCR -CL5 / 16	CL -S	SCR -ST - S4	ST - S	WRN -M4T

※ISO Code
※符合ISO規範

Insert for 445 刀片規格	Insert for 545 刀片規格
SEKN - 1203 	SEKN - 1504 

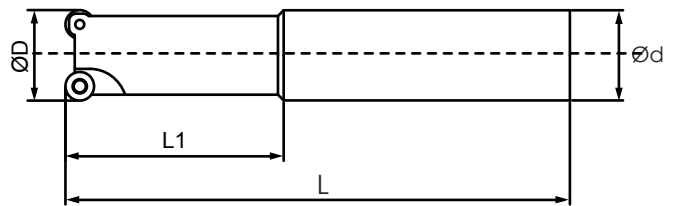
A050 X-POWER Radius Milling Cutter X-POWER 一體式圓刀刃銑刀



Code No. 型號	Type 規格	ØD	L	L1	R	Teeth 刃數	Insert 刀片規格	Screw 螺絲	Wrench 扳手
SPA2002	BT40 - XQP0820.90.3	20	90	40	4	3	QPMT0803	SCR - QP3	T8
SPA2004	BT40 - XQP0825.100.4	25	100	50	4	4			
SPA2006	BT40 - XQP0825.130.4	25	130	80	4	4			
SPA2008	BT40 - XQP1025.100.3	25	100	50	5	3	QPMT10T3	SCR - QP3.5	T15
SPA2010	BT40 - XQP1032.100.4	32	100	50	5	4			
SPA2012	BT40 - XQP1032.130.4	32	130	80	5	4			

※Nachi or Sumitomo inserts recommended
※建議使用Nachi 或Sumitomo刀片

A051 C2334 Radius Endmill C2334型 R角端銑刀

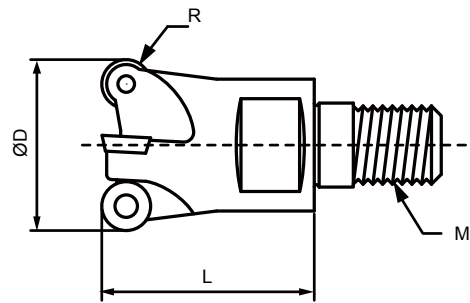


Code No. 型號	Type 規格	ØD	Ød	L1	L	Teeth 刃數	Insert 刀片規格	Screw 螺絲	Wrench 扳手
SPA2032	C2334 - 4R2020. 120	20	20	50	120	3	ROMX0803	SCR - RO3	T10
SPA2034	C2334 - 4R2525. 140	25	25	60	140	3			
SPA2036	C2334 - 4R3232. 170	32	32	80	170	4			

※Walter inserts recommended
※建議使用Walter刀片

A054 RD Radius Corner Modular Endmill

RD型 模組化R角銑刀

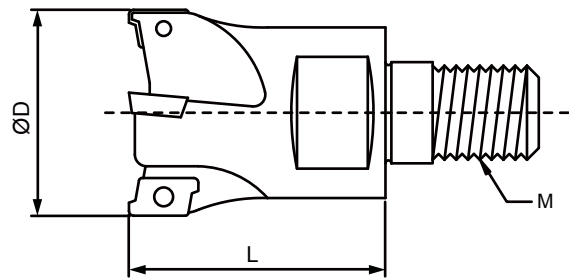


Code No. 型號	Type 規格	ØD	L	M	R	Teeth 刀數	Insert 刀片規格	Screw 螺絲	Wrench 扳手
SPA2142	RD05 - 1002M5	10	18	M5	2.5	2	RDHW0501	SCR-RD2.0	T6
SPA2144	RD05 - 1102M5	11	18	M5	2.5	2			
SPA2146	RD05 - 1203M6	12	19	M6	2.5	3			
SPA2148	RD05 - 1303M6	13	19	M6	2.5	3			
SPA2150	RD07 - 1603M8	16	23	M8	3.5	3	RDMT0702	SCR-RD2.5	T8
SPA2152	RD07 - 1703M8	17	23	M8	3.5	3			
SPA2154	RD07 - 2003M10	20	30	M10	3.5	3			
SPA2156	RD07 - 2103M10	21	30	M10	3.5	3			
SPA2158	RD07 - 2504M12	25	35	M12	3.5	4			
SPA2160	RD07 - 2505M12	25	35	M12	3.5	5			
SPA2162	RD07 - 2604M12	26	35	M12	3.5	4	RDMT1003	SCR-RD3.5	T15
SPA2164	RD07 - 3505M16	35	43	M16	3.5	5			
SPA2166	RD10 - 35C03M16	35	43	M16	5	3			
SPA2168	RD10 - 35C04M16	35	43	M16	5	4			

※Safety inserts recommended
 ※建議使用Safety刀片

A055 RT Lightning Modular Endmill

RT型 模組化閃電銑刀

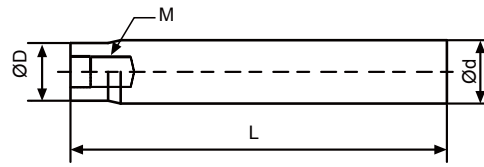


Code No. 型號	Type 規格	ØD	L	M	Teeth 刀數	Insert 刀片規格	Screw 螺絲	Wrench 扳手
SPA2192	RT07 - 1002M5 - KNS	10	18	M5	2	RT0702	SCR-RT2.0	T6
SPA2194	RT07 - 1102M5 - KNS	11	18	M5	2			
SPA2196	RT07 - 1202M6 - KNS	12	19	M6	2			
SPA2198	RT07 - 1302M6 - KNS	13	19	M8	2			
SPA2200	RT07 - 1603M8 - KNS	16	25	M8	3			
SPA2202	RT07 - 1703M8 - KNS	17	25	M8	3			
SPA2204	RT10 - 1602M8 - KNS	16	25	M8	2	RT1003	SCR-RT2.5	T8
SPA2206	RT10 - 1702M8 - KNS	17	25	M8	2			
SPA2208	RT10 - 2003M10 - KNS	20	30	M10	3			
SPA2210	RT10 - 2103M10 - KNS	21	30	M10	3			
SPA2212	RT10 - 2503M12 - KNS	25	35	M12	3			
SPA2214	RT10 - 2603M12 - KNS	26	35	M12	3			
SPA2216	RT10 - 3504M16 - KNS	35	43	M16	4			

※Safety inserts recommended
 ※建議使用Safety刀片

A056 EXT Modular Extension Bar

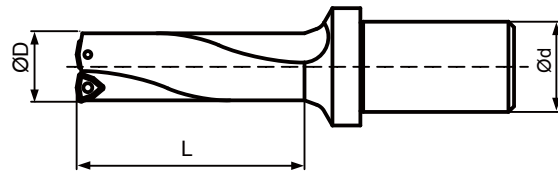
EXT型 模組化延長桿



Code No. 型號	Type 規格	ØD	Ød	M	L
SPA2242	EXT - D10M5 - 100	9.5	10	M5	100
SPA2244	EXT - D12M6 - 100	11.5	12	M6	100
SPA2246	EXT - D16M8 - 130	14	16	M8	130
SPA2248	EXT - D16M8 - 180	14	16	M8	180
SPA2250	EXT - D20M10 - 130	18	20	M10	130
SPA2252	EXT - D20M10 - 180	18	20	M10	180
SPA2254	EXT - D25M12 - 200	23	25	M12	200
SPA2256	EXT - D25M12 - 250	23	25	M12	250
SPA2258	EXT - D25M12 - 300	23	25	M12	300
SPA2260	EXT - D32M16 - 200	29	32	M16	200
SPA2262	EXT - D32M16 - 250	29	32	M16	250
SPA2264	EXT - D32M16 - 300	29	32	M16	300
SPA2266	EXT - D32M16 - 350	29	32	M16	350

A061 EXD Power Super Drill 2D

EXD型 快速鑽(2倍)

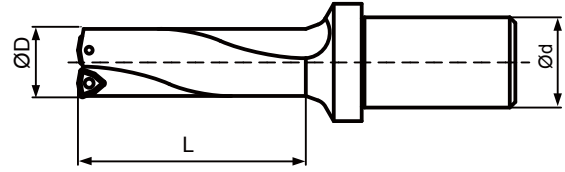


Code No. 型號	Type 規格	ØD	Ød	L	Insert 刀片規格	Screw 螺絲	Wrench 扳手
SPA2502	EXD - 15 x 2 - 25	15	25	30	WCMX030208	SCR-EXD2.5	T8
SPA2504	EXD - 16 x 2 - 25	16	25	32			
SPA2506	EXD - 17 x 2 - 25	17	25	34			
SPA2508	EXD - 18 x 2 - 25	18	25	36			
SPA2510	EXD - 19 x 2 - 25	19	25	38			
SPA2512	EXD - 20 x 2 - 25	20	25	40	WCMX040208	SCR-EXD2.5	T8
SPA2514	EXD - 21 x 2 - 32	21	32	42			
SPA2516	EXD - 22 x 2 - 32	22	32	44			
SPA2518	EXD - 23 x 2 - 32	23	32	46			
SPA2520	EXD - 24 x 2 - 32	24	32	48			
SPA2522	EXD - 25 x 2 - 32	25	32	50	WCMX050308	SCR-EXD3	T10
SPA2524	EXD - 26 x 2 - 32	26	32	52			
SPA2526	EXD - 27 x 2 - 32	27	32	54			
SPA2528	EXD - 28 x 2 - 32	28	32	56			
SPA2530	EXD - 29 x 2 - 32	29	32	58			
SPA2532	EXD - 30 x 2 - 32	30	32	60	WCMX06T308	SCR-EXD3.5	T15
SPA2534	EXD - 31 x 2 - 32	31	32	62			
SPA2536	EXD - 32 x 2 - 32	32	32	64			
SPA2538	EXD - 33 x 2 - 32	33	32	66			
SPA2540	EXD - 34 x 2 - 32	34	32	68			
SPA2542	EXD - 35 x 2 - 32	35	32	70			

※ISO Code
※符合ISO規範

EndMill Systems

A062 EXD Power Super Drill 3D EXD型 快速鑽(3倍)

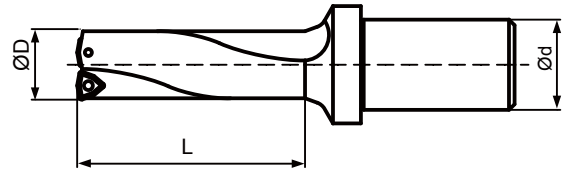


Code No. 型號	Type 規格	ØD	Ød	L	Insert 刀片規格	Screw 螺絲	Wrench 扳手
SPA2562	EXD - 14 x 3 - 25	14	25	42	WCMX030208	SCR-EXD2.5	T8
SPA2564	EXD - 15 x 3 - 25	15	25	45			
SPA2566	EXD - 16 x 3 - 25	16	25	48			
SPA2568	EXD - 17 x 3 - 25	17	25	51			
SPA2570	EXD - 18 x 3 - 25	18	25	54			
SPA2572	EXD - 19 x 3 - 25	19	25	57			
SPA2574	EXD - 20 x 3 - 25	20	25	60			
SPA2576	EXD - 21 x 3 - 32	21	32	63	WCMX040208	SCR-EXD2.5	T8
SPA2578	EXD - 22 x 3 - 32	22	32	66			
SPA2580	EXD - 23 x 3 - 32	23	32	69			
SPA2582	EXD - 24 x 3 - 32	24	32	72			
SPA2584	EXD - 25 x 3 - 32	25	32	75	WCMX050308	SCR-EXD3	T10
SPA2586	EXD - 26 x 3 - 32	26	32	78			
SPA2588	EXD - 27 x 3 - 32	27	32	81			
SPA2590	EXD - 28 x 3 - 32	28	32	84			
SPA2592	EXD - 29 x 3 - 32	29	32	87			
SPA2594	EXD - 30 x 3 - 32	30	32	90			
SPA2596	EXD - 31 x 3 - 32	31	32	93			
SPA2598	EXD - 32 x 3 - 32	32	32	96			
SPA2600	EXD - 33 x 3 - 32	33	32	99			
SPA2602	EXD - 34 x 3 - 32	34	32	102			
SPA2604	EXD - 35 x 3 - 32	35	32	105			
SPA2606	EXD - 36 x 3 - 32	36	32	108			
SPA2608	EXD - 37 x 3 - 32	37	32	111			
SPA2610	EXD - 38 x 3 - 32	38	32	114	WCMX06T308	SCR-EXD3.5	T15
SPA2612	EXD - 39 x 3 - 32	39	32	117			
SPA2614	EXD - 40 x 3 - 40	40	40	120			
SPA2616	EXD - 41 x 3 - 40	41	40	123			
SPA2618	EXD - 42 x 3 - 40	42	40	126			
SPA2620	EXD - 43 x 3 - 40	43	40	129			
SPA2622	EXD - 44 x 3 - 40	44	40	132			
SPA2624	EXD - 45 x 3 - 40	45	40	135			
SPA2626	EXD - 46 x 3 - 40	46	40	138			
SPA2628	EXD - 47 x 3 - 40	47	40	141			
SPA2630	EXD - 48 x 3 - 40	48	40	144			
SPA2632	EXD - 49 x 3 - 40	49	40	147			
SPA2634	EXD - 50 x 3 - 40	50	40	150			
SPA2636	EXD - 51 x 3 - 40	51	40	153			
SPA2638	EXD - 52 x 3 - 40	52	40	156	WCMX06T3084T	SCR-EXD3.5	T15
SPA2640	EXD - 53 x 3 - 40	53	40	159			
SPA2642	EXD - 54 x 3 - 40	54	40	162			
SPA2644	EXD - 55 x 3 - 40	55	40	165			
SPA2646	EXD - 56 x 3 - 40	56	40	168			
SPA2648	EXD - 57 x 3 - 40	57	40	171			
SPA2650	EXD - 58 x 3 - 40	58	40	174			
SPA2652	EXD - 59 x 3 - 40	59	40	177			
SPA2654	EXD - 60 x 3 - 40	60	40	180			

※ISO Code
※符合ISO規範

A063 EXD Power Super Drill 4D

EXD型 快速鑽(4倍)



Code No. 型號	Type 規格	ØD	Ød	L	Insert 刀片規格	Screw 螺絲	Wrench 扳手
SPA2672	EXD - 15 x 4 - 25	15	25	60	WCMX030208	SCR-EXD2.5	T8
SPA2674	EXD - 16 x 4 - 25	16	25	64			
SPA2676	EXD - 17 x 4 - 25	17	25	68			
SPA2678	EXD - 18 x 4 - 25	18	25	72			
SPA2680	EXD - 19 x 4 - 25	19	25	76			
SPA2682	EXD - 20 x 4 - 25	20	25	80	WCMX040208	SCR-EXD2.5	T8
SPA2684	EXD - 21 x 4 - 32	21	32	84			
SPA2686	EXD - 22 x 4 - 32	22	32	88			
SPA2688	EXD - 23 x 4 - 32	23	32	92			
SPA2690	EXD - 24 x 4 - 32	24	32	96			
SPA2692	EXD - 25 x 4 - 32	25	32	100			
SPA2694	EXD - 26 x 4 - 32	26	32	104	WCMX050308	SCR-EXD3	T10
SPA2696	EXD - 27 x 4 - 32	27	32	108			
SPA2698	EXD - 28 x 4 - 32	28	32	112			
SPA2700	EXD - 29 x 4 - 32	29	32	116			
SPA2702	EXD - 30 x 4 - 32	30	32	120			
SPA2704	EXD - 31 x 4 - 32	31	32	124			
SPA2706	EXD - 32 x 4 - 32	32	32	128	WCMX06T308	SCR-EXD3.5	T15
SPA2708	EXD - 33 x 4 - 32	33	32	132			
SPA2710	EXD - 34 x 4 - 32	34	32	136			
SPA2712	EXD - 35 x 4 - 32	35	32	140			
SPA2714	EXD - 36 x 4 - 32	36	32	144			
SPA2716	EXD - 37 x 4 - 32	37	32	148			
SPA2718	EXD - 38 x 4 - 32	38	32	152	WCMX06T308	SCR-EXD3.5	T15
SPA2720	EXD - 39 x 4 - 32	39	32	156			
SPA2722	EXD - 40 x 4 - 40	40	40	160			
SPA2724	EXD - 41 x 4 - 40	41	40	164			
SPA2726	EXD - 42 x 4 - 40	42	40	168			
SPA2728	EXD - 43 x 4 - 40	43	40	172			
SPA2730	EXD - 44 x 4 - 40	44	40	176	WCMX080412	SCR-EXD4	T15
SPA2732	EXD - 45 x 4 - 40	45	40	180			
SPA2734	EXD - 46 x 4 - 40	46	40	184			
SPA2736	EXD - 47 x 4 - 40	47	40	188			
SPA2738	EXD - 48 x 4 - 40	48	40	192			
SPA2740	EXD - 49 x 4 - 40	49	40	196			
SPA2742	EXD - 50 x 4 - 40	50	40	200			
SPA2744	EXD - 51 x 4 - 40	51	40	204			
SPA2746	EXD - 52 x 4 - 40	52	40	208			
SPA2748	EXD - 53 x 4 - 40	53	40	212			
SPA2750	EXD - 54 x 4 - 40	54	40	216	WCMX06T308	SCR-EXD3.5	T15
SPA2752	EXD - 55 x 4 - 40	55	40	220			
SPA2754	EXD - 56 x 4 - 40	56	40	224			
SPA2756	EXD - 57 x 4 - 40	57	40	228			
SPA2758	EXD - 58 x 4 - 40	58	40	232			
SPA2760	EXD - 59 x 4 - 40	59	40	236			
SPA2762	EXD - 60 x 4 - 40	60	40	240			

※ISO Code
※符合ISO規範

EndMill Systems

Screw 螺絲

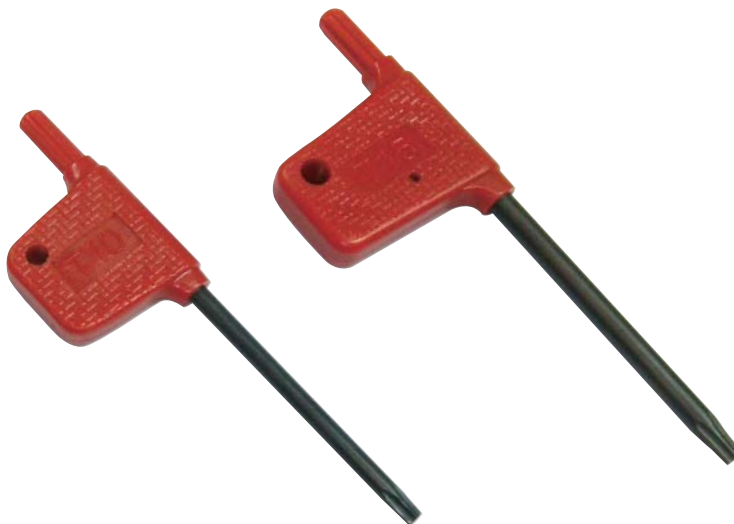


Code No. 型號	Type 規格
SDA0167	SCR-APX2.5
SDA0168	SCR-AR10
SDA0169	SCR-AR12.5
SDA0170	SCR-AR8
SDA0171	SCR-CAP2.5
SDA0172	SCR-CAP4
SDA0173	SCR-CBP3.5
SDA0174	SCR-CBP5
SDA0175	SCR-CEX3.5
SDA0176	SCR-CEX4
SDA0177	SCR-CJU2.5
SDA0178	SCR-CJU3.5
SDA0179	SCR-CJU4
SDA0180	SCR-CJU5
SDA0181	SCR-CL5/16
SDA0182	SCR-CR10
SDA0183	SCR-CR12.5
SDA0184	SCR-CR4
SDA0185	SCR-CR5
SDA0186	SCR-CR6
SDA0187	SCR-CR8
SDA0188	SCR-CRC4
SDA0189	SCR-CRC5
SDA0190	SCR-CRP3
SDA0191	SCR-CRP4
SDA0192	SCR-CRS3

Code No. 型號	Type 規格
SDA0193	SCR-CRS4
SDA0194	SCR-CRS5
SDA0195	SCR-CRT4
SDA0196	SCR-CSJ2.5
SDA0197	SCR-CSJ3
SDA0198	SCR-CSJ4
SDA0199	SCR-EHU2.5
SDA0200	SCR-EHU4
SDA0201	SCR-ESR3.5
SDA0202	SCR-ESR4
SDA0203	SCR-ESR5
SDA0204	SCR-EXD2.5
SDA0205	SCR-EXD3
SDA0206	SCR-EXD3.5
SDA0207	SCR-EXD4
SDA0208	SCR-IMP3
SDA0209	SCR-IMP4
SDA0210	SCR-OD2.5
SDA0211	SCR-QP3
SDA0212	SCR-QP3.5
SDA0213	SCR-RD2.0
SDA0214	SCR-RD2.5
SDA0215	SCR-RD3.5
SDA0216	SCR-RGH2.5
SDA0217	SCR-RGH4
SDA0218	SCR-RGH5

Code No. 型號	Type 規格
SDA0219	SCR-RGZ4
SDA0220	SCR-RGZ5
SDA0221	SCR-RO3
SDA0222	SCR-RT2.0
SDA0223	SCR-RT2.5
SDA0224	SCR-SE4
SDA0225	SCR-SE5
SDA0226	SCR-SFM5
SDA0227	SCR-SN3.5
SDA0228	SCR-ST-S4
SDA0229	SCR-ST-T4
SDA0230	SCR-TB2.5
SDA0231	SCR-TB3.5
SDA0232	SCR-TCM4
SDA0233	SCR-TS2.5
SDA0234	SCR-TS4
SDA0235	SCR-TS5
SDA0236	SCR-W1/4
SDA0237	SCR-W1/4L
SDA0238	SCR-W3/16
SDA0239	SCR-W3/16S
SDA0240	SCR-W5/16
SDA0241	SCR-WEX3
SDA0242	SCR-WEX4
SDA0243	SCR-XEM2.5
SDA0244	SCR-XEM4

Wrench 扳手



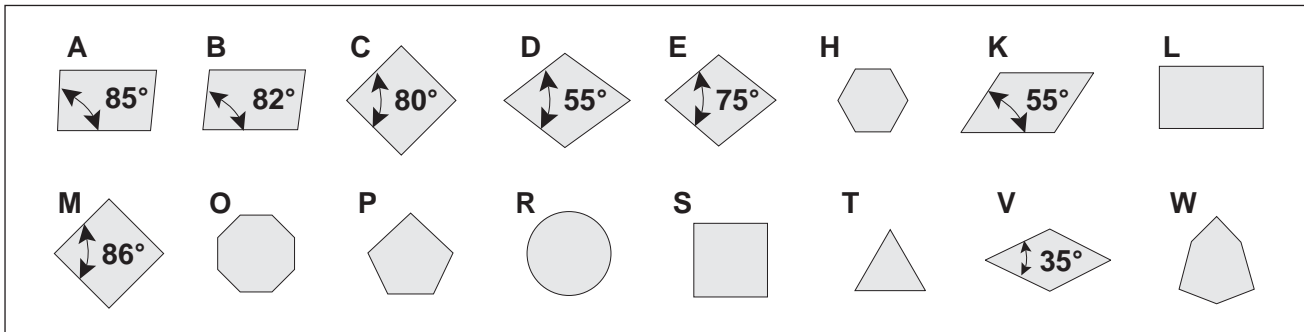
Code No. 型號	Type 規格
STD0001	T6
STD0003	T8
STD0004	T10
STD0005	T15
STD0006	T20
STD0007	T30
STD0008	WRN-M3L
STD0009	WRN-M4L
STD0010	WRN-M4T
STD0011	WRN-M5L
STD0012	WRE-M5L

**Milling Cutter Inserts
Metric Series ISO 1832-1991**

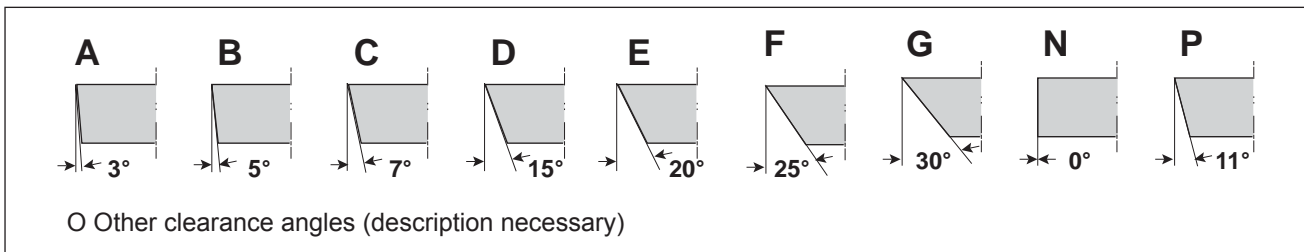
S E A N 12 03 A F T N - M16

1 2 3 4 5 6 7 8 9 10

1 Shape



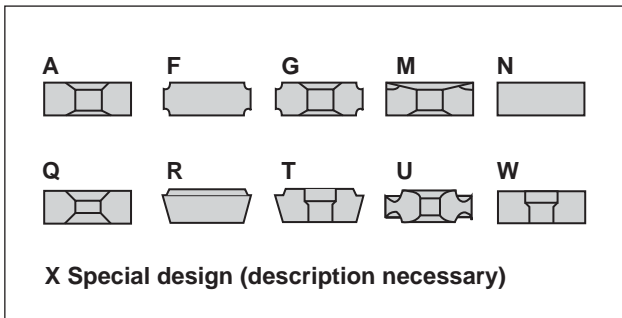
2 Clearance angle



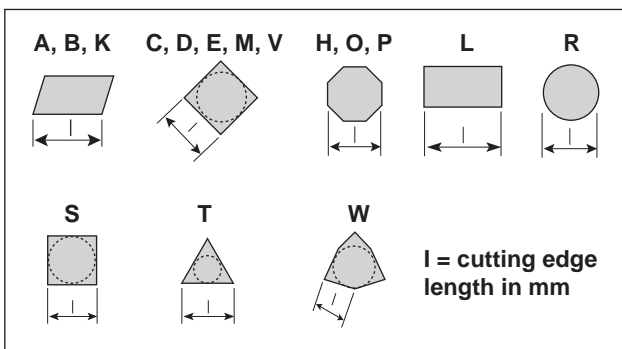
3 Tolerances

Tol class	Tolerance ± mm			Ford, dimension mm					
	m	s	d	6.53	9.525	12.70	15.875	19.05	25.40
A	0.005	0.025	0.025	•	•	•	•	•	•
E	0.025	0.025	0.025	•	•	•	•	•	•
F	0.005	0.025	0.013	•	•	•	•	•	•
G	0.025	0.130	0.025	•	•	•	•	•	•
H	0.013	0.025	0.013	•	•	•	•	•	•
J	0.005	0.025	0.050	•	•				
	0.005	0.025	0.080			•			
	0.005	0.025	0.100				•	•	
	0.005	0.025	0.130						•
K	0.013	0.025	0.050	•	•				
	0.013	0.025	0.080			•			
	0.013	0.025	0.100				•	•	
	0.013	0.025	0.130						•
M	0.080	0.130	0.050	•	•				
	0.130	0.130	0.080			•			
	0.150	0.130	0.100				•	•	
	0.180	0.130	0.130						•
U	0.130	0.130	0.080	•	•				
	0.200	0.130	0.130			•			
	0.270	0.130	0.180				•	•	
	0.380	0.130	0.250						•

4 Type of Insert



5 Cutting edge length



Comparison
Cutting edge length/I.C. (d)

IC (d)	Shape					
	C	D	R,S	T	V	W
	Cutting edge length					
5.56						03
6.35	06	07	06	11		04
12.70	09	11	09	16	16	06
15.88	16	19	15	22		08
19.05	19	23	19	33		
25.40	25	31	25	44		

IC = Theoretical diameter of inscribed circle

6 Thickness

	mm	mm
	01=1.59	05=5.56
	T1=1.98	06=6.35
	02=2.38	07=7.94
	03=3.18	08=8.00
	T3=3.97	09=9.52
	04=4.76	

7 Insert with Wiper Edge/Radius

1st digit

A = 45°
D = 60°
E = 75°
F = 85°
P = 90°
Z = Special

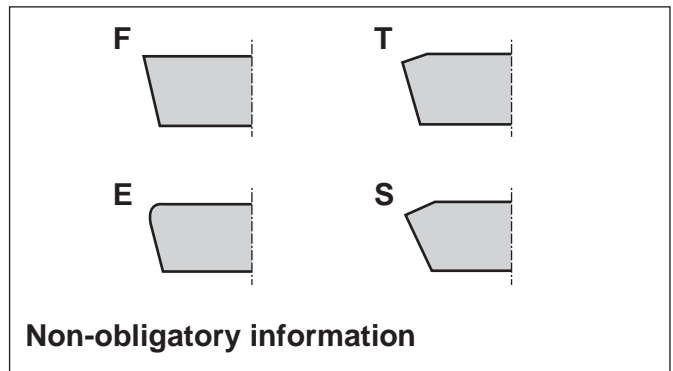
2nd digit

A = 3° F = 25°
D = 5° G = 30°
E = 7° N = 0°
F = 15° P = 11°
P = 20°
Z = Special

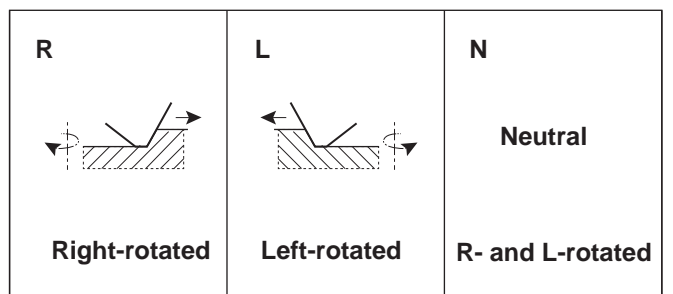
Radius mm

M0* = Round Inserts
00 = Sharp
01 = 0.1
02 = 0.2
04 = 0.4
08 = 0.8
12 = 1.2
etc. *Metric Sizes

8 Cutting Edge Condition



9 Direction of Cutting





Technical Data

技術資料

