



Boring Head Systems

搪刀系統

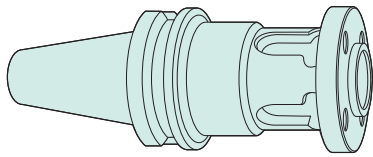


BORING SYSTEM

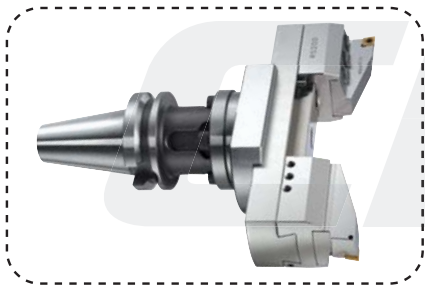
搪刀系統

G-01

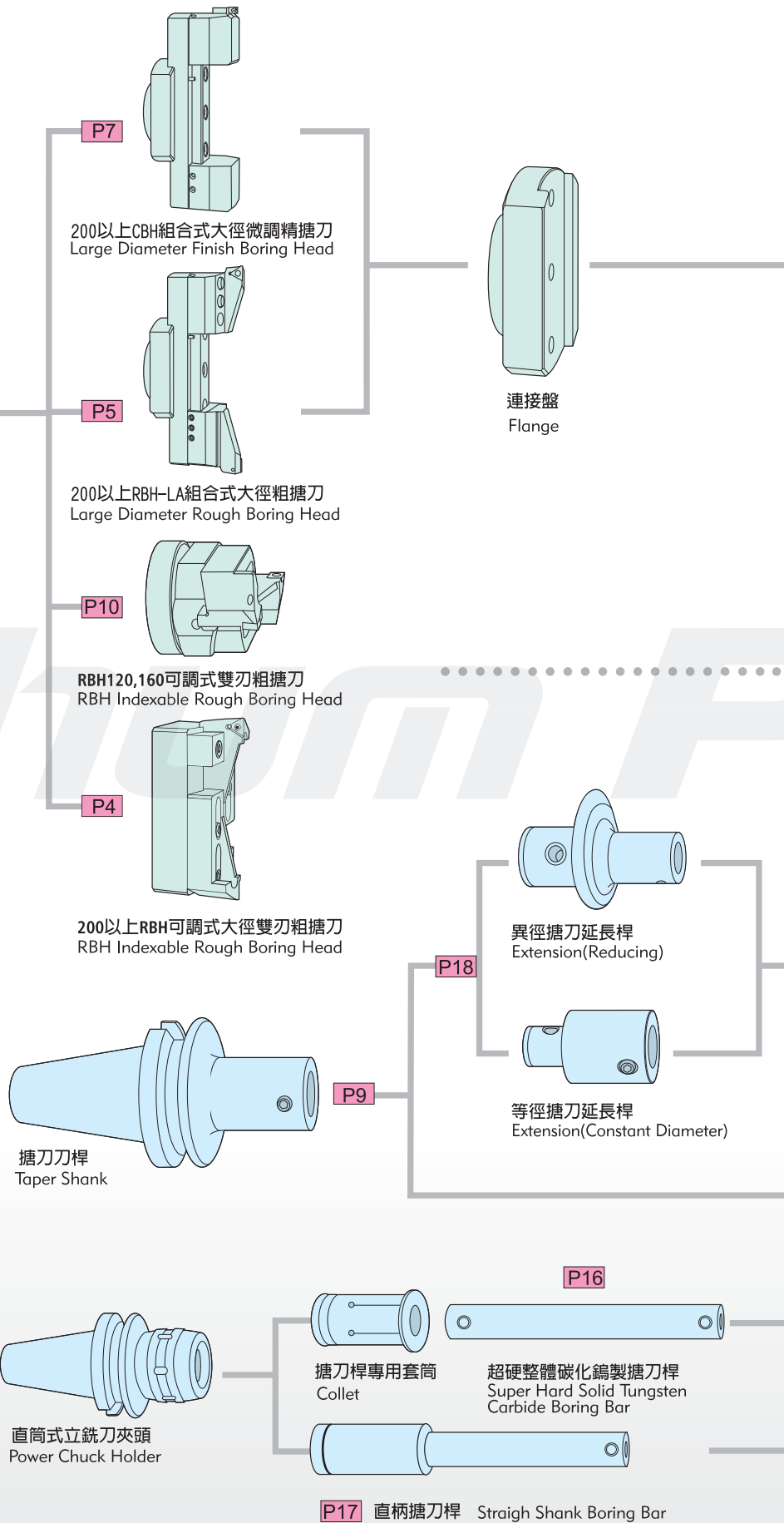
BST系列 BST Boring System



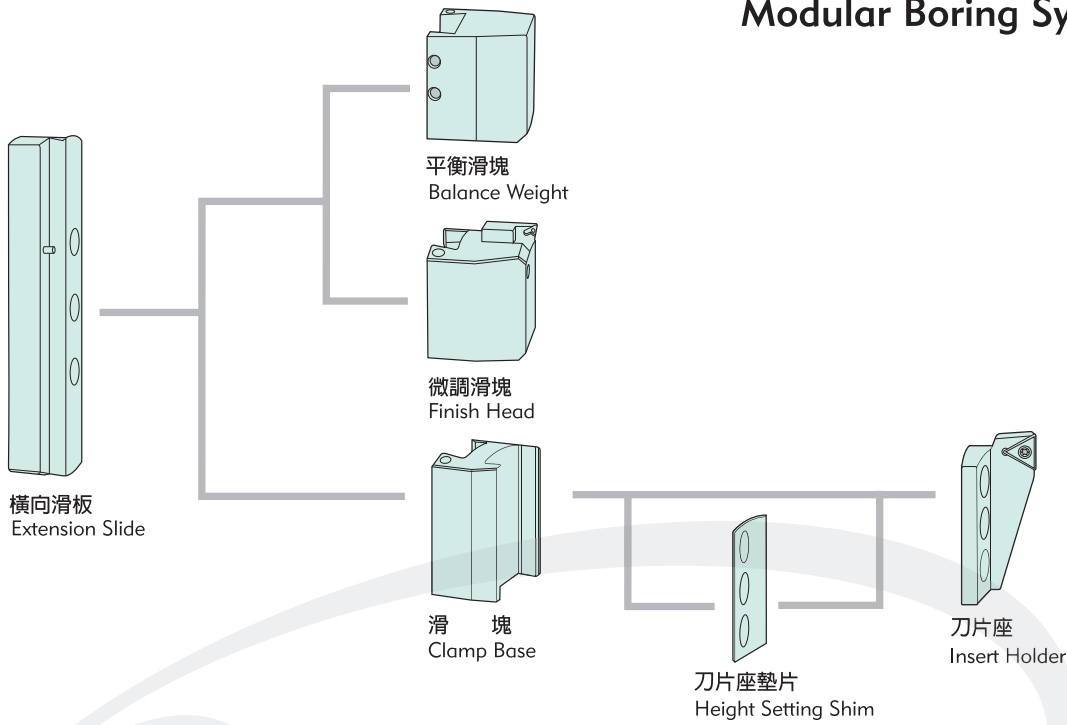
搪刀刀桿
Taper Shank



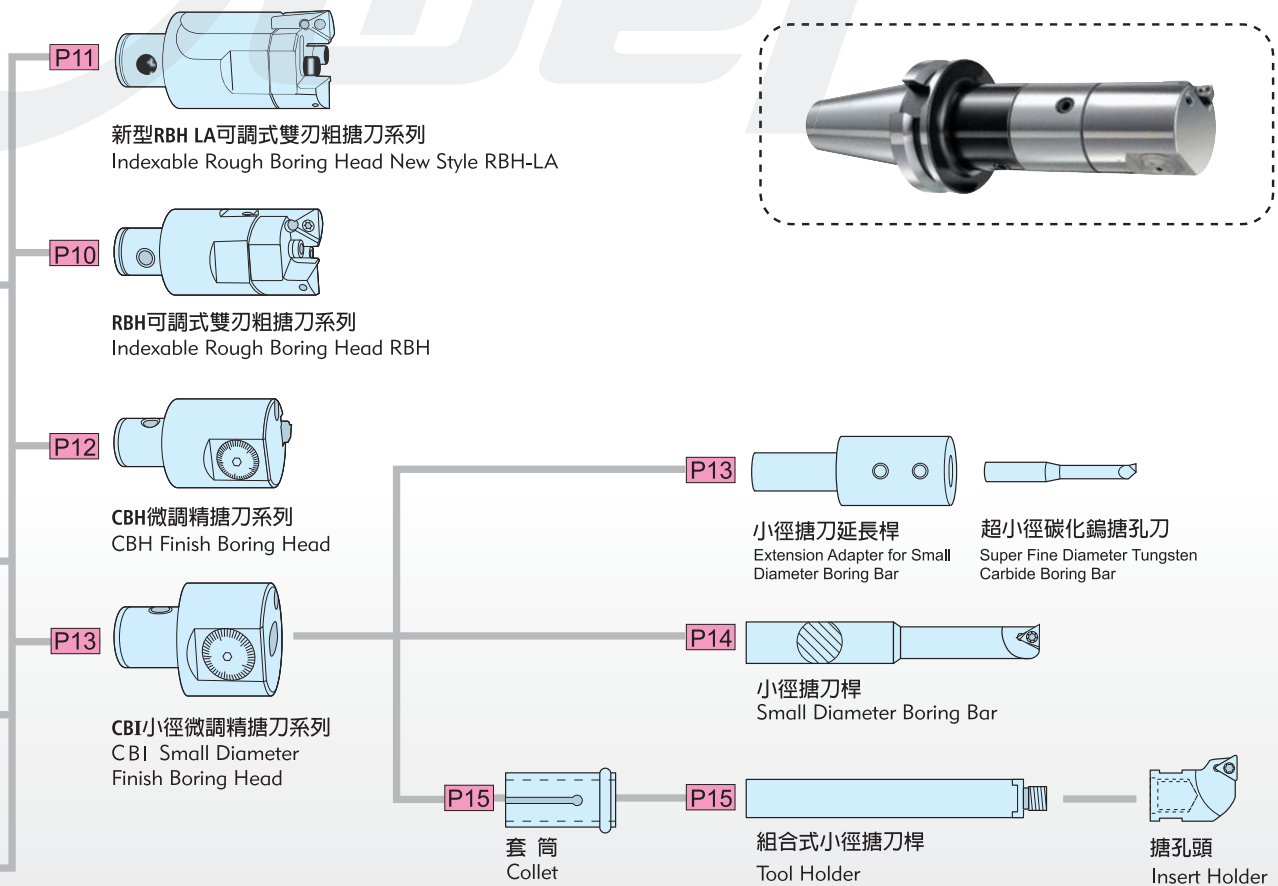
LBK系列 LBK Boring System



搪刀搭配系統 Modular Boring Systems



BORING CUTTER SYSTEM

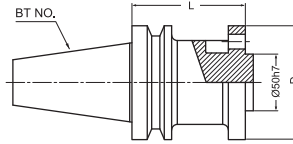


BORING SYSTEM

搪刀刀桿 BST系列

Taper Shank for Boring Heads Series BST

BST系列
BST Series



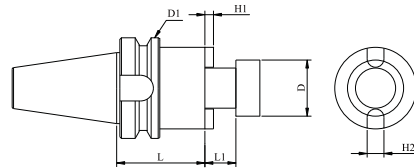
規格 Specifications:

型號 Code NO.	規格 TYPE	樣式 Fig.	長度(L)mm Length	外徑(D)mm External Diameter	接合搪刀頭 Applicable Boring Heads	重量kg Weight
BT26102	BT40-BST-070L	3	70	95	RBH120以上 CBH200以上 大徑搪刀系列 RBH120 and above; CBH200 and above; large diameter boring heads series	3.2
BT26104	BT50-BST-100L		100			5.1
BT26106	BT50-BST-150L		150			6.8
BT26108	BT50-BST-200L		200			9.6
BT26110	BT50-BST-250L		250			11.5
BT26112	BT50-BST-300L		300			13.5
BT26114	BT50-BST-350L		350			15.5
BT26116	BT50-BST-400L		400			17.5

BT面銑式立銑刀把

BT FACE MILL HOLDER

BT Shank JIS B 6339(MAS 403 BT) with Face Mill DIN 6357



規格 Specifications:

型號 Code NO.	規格 TYPE	樣式 Fig.	長度(L)mm Length	外徑(D)mm External Diameter	接合搪刀頭 Applicable Boring Heads	重量kg Weight
BTO6115	BT50-FMA47.625-75	3	75	128	RBH600LA, RBH900LA, CBH600, CBH900	7.0

Chum Power®

Ø200以上RBH可調式大徑雙刃粗搪刀系列 《搪孔範圍 Ø200 - Ø454mm》

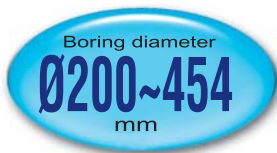
RBH Indexable Twin-bit Rough Boring Head 《Boring Range from Ø200 - Ø454mm》

特色

1. 適用單刃搪孔，雙刃搪孔及高低階搪孔。搪孔範圍Ø200~Ø454mm。
2. 新型刀刃滑座設計，刀背補強。加工時，滑座承受的兩個作用力相互抵消，產生最大剛性和切削力。適合各形態的搪孔作業。
3. 可依照各種不同加工需求，輕易調整搪刀，做少量多樣的加工。備有多種長度刀桿可加工至所需深度。
4. 清晰的側邊刻度，協助使用者輕易調整到所需的範圍，無須在刀具設定儀上預設。
5. 最適合在各型切削中心機或搪床上配合使用，並可搭配各種廠牌相同規格的指定刀片，節省刀具研磨時間並大幅增加搪孔效率。
6. 專利高低段差設計，平刃或高低刃均可採用。
7. 直徑 Ø200mm以上大孔徑搪刀，使用直接組件，結構簡單剛性強，調整範圍為直徑50mm。

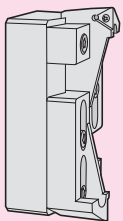
Features

1. The head is suitable for single bit boring, twin-bit boring and step boring with working diameter from Ø200mm to Ø454mm on diameter.
2. New cartridge style with built-up rib. The pressure imposed on both cartridges counteracts producing highest rigidity and cutting efficiency, most suitable for a variety of borings.
3. Boring head can be easily adjusted to different boring needs for machining on demand. Boring depth can be extended by tool connection.
4. Clear side division provides a convenient adjustment without using a tool pre-setter.
5. Most suitable for boring on various machine centers or boring mills. Universal design accepts inserts of any brands, which will reduce tool grinding and greatly improve boring performance.
6. Patented step boring design; suitable for both level boring and step boring.
7. Boring heads over Ø200mm feature direct module, simple structure and high rigidity with adjustment range 50mm on diameter.



規格 Specifications:

型號 Code NO.	搪頭規格 Boring Head Type	接合型號 BST No.	搪孔範圍Dmm Boring Range	搪頭長度 L2 mm	刀片規格 Insert	重量 kg Weight
SNG0061	RBH200-254-C	BST Series	200~254	95	CCMT120408	6.5
SNG0062	RBH200-254-T				TCMT220408	
SNG0063	RBH200-254-S				SCMT120404	
SNG0064	RBH250-304-C		250~304		CCMT120408	8.3
SNG0065	RBH250-304-T				TCMT220408	
SNG0066	RBH250-304-S				SCMT120404	
SNG0067	RBH300-354-C		300~354		CCMT120408	10
SNG0068	RBH300-354-T				TCMT220408	
SNG0069	RBH300-354-S				SCMT120404	
SNG0070	RBH350-404-C		350~404		CCMT120408	11.7
SNG0071	RBH350-404-T				TCMT220408	
SNG0072	RBH350-404-S				SCMT120404	
SNG0073	RBH400-454-C		400~454		CCMT120408	13.4
SNG0074	RBH400-454-T				TCMT220408	
SNG0075	RBH400-454-S				SCMT120404	



BORING SYSTEM

Ø200以上RBH-LA組合式大徑粗搪刀系列

RBH-LA Large Diameter Modular Rough Boring Head with Diameter over Ø200mm

特色

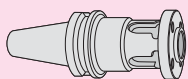


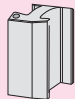


1. 通用Ø200~Ø1250mm大型孔徑加工使用。
2. 粗、精搪刀使用同基礎組件，且可另選配附件搭配使用。加工調整範圍為直徑110mm。600LA與900LA調整範圍為350mm。
3. 粗搪刀，具有多種刀片選擇，可通用於多種材質及加工方式。
4. 精搪刀另有鋁合金橫向滑板，可選用來降低刀具重量。
5. 另有外圓搪孔組件可選用，加工範圍直徑為Ø20~Ø300mm。



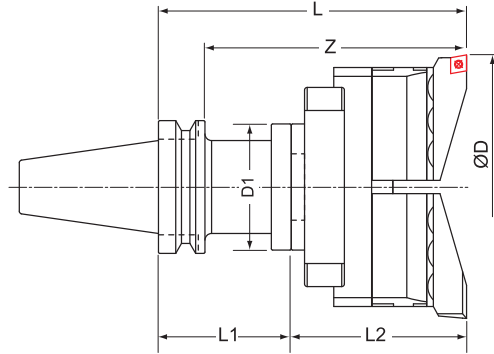
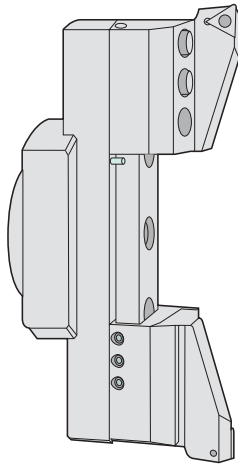
Features

1. This type is suitable for large diameter boring with ranges from Ø200 mm to Ø1250 mm.
2. The structure includes common flange and extension slide for both rough and finish boring heads. Available can be optional accessories for different works. Adjustment range is within 110mm on diameter. The adjustment range for both 600LA and 900LA is 350mm.
3. Options of various inserts for rough boring of different materials and boring styles.
4. Available is the horizontal slide made of Aluminum alloy to reduce total weight.
5. Options of external boring kit with boring range from Ø20mm to Ø300mm.

規格 Specifications:

搪頭型號 Boring Head Type	型號 Type		RBH 200LA	RBH 300LA	RBH 400LA	RBH 500LA	RBH 600LA	RBH 900LA
	長度 Length(mm)		130	130	130	130	150	150
	整組重量(kg) Total Weight(kg)	合金鋼 Alloy Steel	9.5	11.5	13.5	15.5	33	43
		鋁合金 Aluminum Alloy	7.2	8.0	8.8	9.6	16.0	20.7
加工直徑 D(mm) Boring Diameter		200-310	300-410	400-510	500-610	600-950	900-1250	
組合式 Module	接合刀桿 Taper Shank		BT50-BST / NT50-BST系列 BT50-BST / NT50-BST Series				BT50-FMA-47.625	
	連接盤 Flange		BR200				BR600	BR900
	重量(kg) Weight	合金鋼 Alloy Steel	合金鋼 Alloy Steel 2.7 kg				19	29
		鋁合金 Aluminum Alloy					8.8	13.5
	橫向滑板 Extension Slide		RST200	RST300	RST400	RST500	RST300x2只(pieces)	
	重量(kg) Weight	合金鋼 Alloy Steel	3.4	5.4	7.4	9.4	10.8	
		鋁合金 Aluminum Alloy	1.1	1.9	2.7	3.5	3.8	
	滑塊 Clamp Base		RS200					
	重量(kg) Weight		0.98 kg					
	刀片座墊片 Height Setting Shim		RS201					
	重量(kg) Weight		0.05 kg					
	刀片座 Insert Holder		RB200C12	RB200T16	RB200T22	RB200S12		
	適合刀片 Applicable Insert		CCMT120404	TCMT16T304	TCMT220404	SCMT120404		
重量(kg) Weight	0.68 kg							

《 搪孔範圍 Ø200 - Ø1250mm 》 《 Boring Range from Ø200 - Ø1250mm 》



型號 Code NO.	搪頭規格 Boring Head Type	接合型號 BST No.	搪孔範圍D mm Boring Range	搪頭長度 L2 mm	刀片規格 Insert	重量 Weight (kg)	
						合金鋼 Alloy Steel	鋁合金 Alum. Alloy
SNG0076	RBH200-310LA	BST Series	200~310	130	CCMT120408	9.5	7.2
SNG0077	RBH200-310LA	BST Series	200~310	130	TCMT16T304	9.5	7.2
SNG0078	RBH200-310LA	BST Series	200~310	130	TCMT220408	9.5	7.2
SNG0079	RBH200-310LA	BST Series	200~310	130	SCMT120404	9.5	7.2
SNG0080	RBH300-410LA	BST Series	300~410	130	CCMT120408	11.5	8.0
SNG0081	RBH300-410LA	BST Series	300~410	130	TCMT16T304	11.5	8.0
SNG0082	RBH300-410LA	BST Series	300~410	130	TCMT220408	11.5	8.0
SNG0083	RBH300-410LA	BST Series	300~410	130	SCMT120404	11.5	8.0
SNG0084	RBH400-510LA	BST Series	400~510	130	CCMT120408	13.5	8.8
SNG0085	RBH400-510LA	BST Series	400~510	130	TCMT16T304	13.5	8.8
SNG0086	RBH400-510LA	BST Series	400~510	130	TCMT220408	13.5	8.8
SNG0087	RBH400-510LA	BST Series	400~510	130	SCMT120404	13.5	8.8
SNG0088	RBH500-610LA	BST Series	500~610	130	CCMT120408	15.5	9.6
SNG0089	RBH500-610LA	BST Series	500~610	130	TCMT16T304	15.5	9.6
SNG0090	RBH500-610LA	BST Series	500~610	130	TCMT220408	15.5	9.6
SNG0091	RBH500-610LA	BST Series	500~610	130	SCMT120404	15.5	9.6
SNG0092	RBH600-950LA	FMA-47.625	600~950	150	CCMT120408	33.0	16.0
SNG0093	RBH600-950LA	FMA-47.625	600~950	150	TCMT16T304	33.0	16.0
SNG0094	RBH600-950LA	FMA-47.625	600~950	150	TCMT220408	33.0	16.0
SNG0095	RBH600-950LA	FMA-47.625	600~950	150	SCMT120404	33.0	16.0
SNG0096	RBH900-1250LA	FMA-47.625	900~1250	150	CCMT120408	43.0	20.7
SNG0097	RBH900-1250LA	FMA-47.625	900~1250	150	TCMT16T304	43.0	20.7
SNG0098	RBH900-1250LA	FMA-47.625	900~1250	150	TCMT220408	43.0	20.7
SNG0099	RBH900-1250LA	FMA-47.625	900~1250	150	SCMT120404	43.0	20.7

BORING SYSTEM

Ø200以上CBH組合式大徑微調精搪刀系列

CBH Large Diameter Modular Finish Boring Head with Diameter over Ø200mm

特色

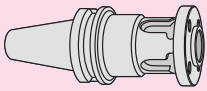


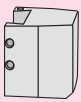

1. 通用Ø200~Ø1250mm大型孔徑加工使用。
2. 粗、精搪刀使用同基礎組件，且可另選配附件搭配使用。加工調整範圍為直徑110mm。CBH600與900調整範圍為350mm。
3. 精搪刀另有鋁合金橫向滑板，可選用來降低刀具重量。

Features

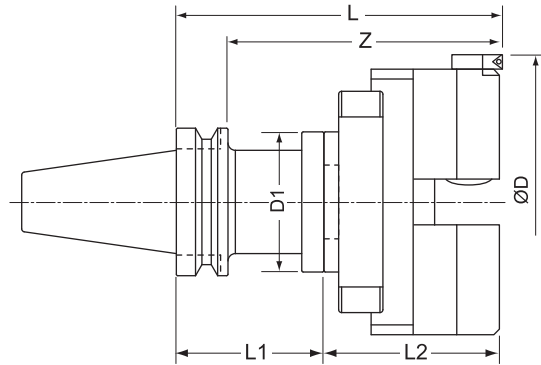
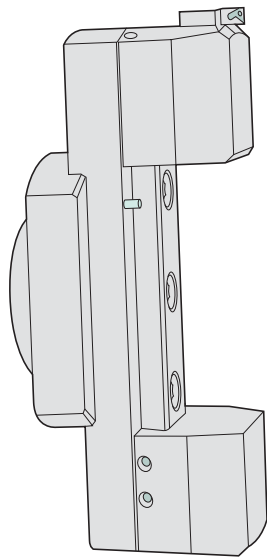
1. This type is suitable for large diameter boring with ranges from Ø200mm to Ø1250mm.
2. The structure includes common flange and extension slide for both rough and finish boring heads. Available can be optional accessories for different works. Adjustment range is within 110mm on diameter. The adjustment range for both CBH600 and CBH900LA is 350mm.
3. Available is the horizontal slide made of Aluminum alloy to reduce total weight.



規格 Specifications:

搪頭型號 Boring Head Type	型號 Type		CBH200	CBH300	CBH400	CBH500	CBH600	CBH900
	長度 Length		130	130	130	130	150	150
	整組重量(kg) Total Weight(kg)	合金鋼 Alloy Steel	9.7	11.7	13.7	15.7	33	43
		鋁合金 Aluminum Alloy	7	7.8	8.6	9.4	15.8	20.5
	加工直徑 D(mm) Boring Diameter		200-310	300-410	400-510	500-610	600-950	900-1250
組合式 Module	接合刀桿 Taper Shank		BT50-BST / NT50-BST 系列 BT50-BST / NT50-BST Series				BT50-FMA-47.625	
	連接盤 Flange		BR200				BR600	BR900
	重量(kg) Weight	合金鋼 Alloy Steel	合金鋼 Alloy Steel 2.7 kg				19	29
		鋁合金 Alum. Alloy					8.8	13.5
	橫向滑板 Extension Slide		RST200	RST300	RST400	RST500	RST300x2只(pieces)	
	重量(kg) Weight	合金鋼 Alloy Steel	3.4	5.4	7.4	9.4	10.8	
		鋁合金 Alum. Alloy	1.1	1.9	2.7	3.5	3.8	
	平衡滑塊 Balance Weight		RBN200					
	重量(kg) Weight		1.6 kg					
	微調滑塊 Finish Head		CB200					
重量(kg) Weight		1.6 kg						
適合刀片 Applicable Insert		TP08/M2.2/T7, TP09/M2.5/T8, TC11/M2.5/T8						

《 搪孔範圍 Ø200-Ø1250mm 》《 Boring Range from Ø200-Ø1250mm 》



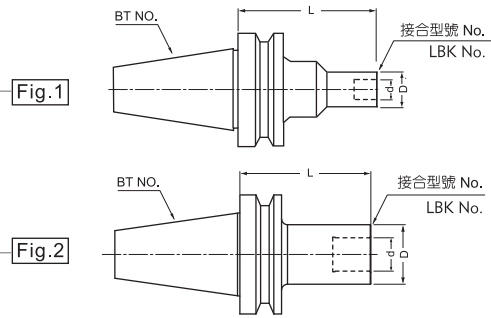
型號 Code NO.	搪頭規格 Boring Head Type	接合型號 BST No.	搪孔範圍D mm Boring Range	搪頭長度 L2 mm	刀片規格 Insert	重量 Weight (kg)	
						合金鋼 Alloy Steel	鋁合金 Alum. Alloy
SNG0100	CBH200	BST Series	200~310	130	TP08/M2.2/T7	9.7	7.0
SNG0101	CBH200	BST Series	200~310	130	TP09/M2.5/T8	9.7	7.0
SNG0102	CBH200	BST Series	200~310	130	TC11/M2.5/T8	9.7	7.0
SNG0103	CBH300	BST Series	300~410	130	TP08/M2.2/T7	11.7	7.8
SNG0104	CBH300	BST Series	300~410	130	TP09/M2.5/T8	11.7	7.8
SNG0105	CBH300	BST Series	300~410	130	TC11/M2.5/T8	11.7	7.8
SNG0106	CBH400	BST Series	400~510	130	TP08/M2.2/T7	13.7	8.6
SNG0107	CBH400	BST Series	400~510	130	TP09/M2.5/T8	13.7	8.6
SNG0108	CBH400	BST Series	400~510	130	TC11/M2.5/T8	13.7	8.6
SNG0109	CBH500	BST Series	500~610	130	TP08/M2.2/T7	15.7	9.4
SNG0110	CBH500	BST Series	500~610	130	TP09/M2.5/T8	15.7	9.4
SNG0111	CBH500	BST Series	500~610	130	TC11/M2.5/T8	15.7	9.4
SNG0112	CBH600	FMA-47.625	600~950	150	TP08/M2.2/T7	33	15.8
SNG0113	CBH600	FMA-47.625	600~950	150	TP09/M2.5/T8	33	15.8
SNG0114	CBH600	FMA-47.625	600~950	150	TC11/M2.5/T8	33	15.8
SNG0115	CBH900	FMA-47.625	900~1250	150	TP08/M2.2/T7	43	20.5
SNG0116	CBH900	FMA-47.625	900~1250	150	TP09/M2.5/T8	43	20.5
SNG0117	CBH900	FMA-47.625	900~1250	150	TC11/M2.5/T8	43	20.5

BORING SYSTEM

搪刀刀桿 LBK系列

Taper Shank for Boring Heads Series LBK

LBK系列
LBK Series



規格 Specifications:

型號 Code NO.	規格 TYPE	樣式 Fig.	長度(L)mm Length	外徑(D)mm External Diameter	接合搪刀頭 Applicable Boring Heads	重量kg Weight
BT26002	BT30-LBK1-070L	2	70	19	CBH20	0.5
BT26004	BT30-LBK2-080L		80	24	RBH25 ; CBH25	0.6
BT26006	BT30-LBK3-080L		80	31	RBH32 ; CBH32	0.7
BT26008	BT30-LBK4-070L		70	39	RBH40 ; CBH40 ; CBI 4	0.8
BT26010	BT30-LBK5-060L		60	50	RBH52 ; CBH52 ; CBI 5	0.8
BT26012	BT30-LBK6-060L		60	64	RBH68 ; RBH90 ; CBH68 ; CBH100 ; CBH150 ; CBI6	1.0
BT26014	BT40-LBK1-075L	2	75	19	CBH20	1.0
BT26016	BT40-LBK1-105L		105	19	CBH20	1.2
BT26018	BT40-LBK2-085L		85	24	RBH25 ; CBH25	1.1
BT26020	BT40-LBK2-115L		115	24	RBH25 ; CBH25	1.4
BT26022	BT40-LBK3-095L		95	31	RBH32 ; CBH32	1.2
BT26024	BT40-LBK3-125L		125	31	RBH32 ; CBH32	1.5
BT26026	BT40-LBK3-155L		155	31	RBH32 ; CBH32	1.7
BT26028	BT40-LBK4-085L		85	39	RBH40 ; CBH40 ; CBI4	1.3
BT26030	BT40-LBK4-130L		130	39	RBH40 ; CBH40 ; CBI4	1.9
BT26032	BT40-LBK4-175L		175	39	RBH40 ; CBH40 ; CBI4	2.2
BT26034	BT40-LBK5-075L		75	50	RBH52 ; CBH52 ; CBI5	1.3
BT26036	BT40-LBK5-125L		125	50	RBH52 ; CBH52 ; CBI5	2.3
BT26038	BT40-LBK5-175L		175	50	RBH52 ; CBH52 ; CBI5	3.0
BT26040	BT40-LBK6-065L		65	64	RBH68 ; RBH90 ; CBH68 ; CBH100 ; CBH150 ; CBI6	1.3
BT26042	BT40-LBK6-115L	115	64	RBH68 ; RBH90 ; CBH68 ; CBH100 ; CBH150 ; CBI6	2.7	
BT26044	BT40-LBK6-165L	165	64	RBH68 ; RBH90 ; CBH68 ; CBH100 ; CBH150 ; CBI6	3.9	
BT26046	BT50-LBK1-115L	1	115	31/19	CBH20	4.0
BT26048	BT50-LBK1-145L		145	31/19	CBH20	4.1
BT26050	BT50-LBK2-110L	2	110	24	RBH25 ; CBH25	3.9
BT26052	BT50-LBK2-140L		140	24	RBH25 ; CBH25	4.0
BT26054	BT50-LBK3-125L		125	31	RBH32 ; CBH32	4.1
BT26056	BT50-LBK3-155L		155	31	RBH32 ; CBH32	4.2
BT26058	BT50-LBK4-115L		115	39	RBH40 ; CBH40 ; CBI4	4.3
BT26060	BT50-LBK4-145L		145	39	RBH40 ; CBH40 ; CBI4	4.4
BT26062	BT50-LBK4-175L		175	39	RBH40 ; CBH40 ; CBI4	4.8
BT26064	BT50-LBK4-205L		205	39	RBH40 ; CBH40 ; CBI4	4.9
BT26066	BT50-LBK5-105L		105	50	RBH52 ; CBH52 ; CBI5	4.5
BT26068	BT50-LBK5-180L		180	50	RBH52 ; CBH52 ; CBI5	5.5
BT26070	BT50-LBK5-240L	240	50	RBH52 ; CBH52 ; CBI5	6.2	
BT26072	BT50-LBK5-300L	1	300	64/50	7.6	
BT26074	BT50-LBK6-095L	2	95	64	RBH68 ; RBH90 ; CBH68 ; CBH100 ; CBH150 ; CBI6	4.5
BT26076	BT50-LBK6-170L		170	64	RBH68 ; RBH90 ; CBH68 ; CBH100 ; CBH150 ; CBI6	6.3
BT26078	BT50-LBK6-230L		230	64	RBH68 ; RBH90 ; CBH68 ; CBH100 ; CBH150 ; CBI6	7.6
BT26080	BT50-LBK6-290L		290	64	RBH68 ; RBH90 ; CBH68 ; CBH100 ; CBH150 ; CBI6	9.0
BT26082	BT50-LBK6-350L	1	350	90/64	13.5	
BT26084	IBT50-LBK6-350L	2	350	64	11.2	

※IBT是專為抑制搪孔共振而改良之專用刀桿

RBH可調式雙刃粗搪刀系列《搪孔範圍Ø25 - Ø204mm》

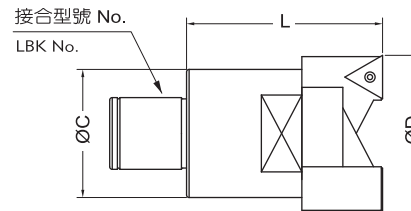
RBH Indexable Twin-bit Rough Boring Head 《Boring Range from Ø25 - Ø204mm》

特色

1. 適用單刃搪孔，雙刃搪孔及高低階搪孔。搪孔範圍Ø25~Ø204mm。
2. 新型刀刃滑座設計，刀背補強。加工時，滑座承受的兩個作用力相互抵消，產生最大剛性和切削力。適合各形態的搪孔作業。
3. 可依照各種不同加工需求，輕易調整搪刀，做少量多樣的加工。加工深度可配合延長桿延伸至所需長度。
4. 清晰的側邊刻度，協助使用者輕易調整到所需的範圍，無須在刀具設定儀上預設。
5. 最適合在各型切削中心機或搪床上配合使用，並可搭配各種廠牌相同規格的指定刀片，節省刀具研磨時間並大幅增加搪孔效率。
6. 專利高低段差設計，平刃或高低刃均可採用。

Features

1. The head is suitable for single bit boring, twin-bit boring and step boring with working diameter from Ø25mm to Ø204mm on diameter.
2. New cartridge style with built-up rib. The pressure imposed on both cartridges counteracts producing highest rigidity and cutting efficiency, most suitable for a variety of borings.
3. Boring head can be easily adjusted to different boring needs for machining on demand. Boring depth can be extended by tool connection.
4. Clear side division provides a convenient adjustment without using a tool pre-setter.
5. Most suitable for boring on various machine centers or boring mills. Universal design accepts inserts of any brands, which will reduce tool grinding and greatly improve boring performance.
6. Patented step boring design; suitable for both level boring and step boring.



專利號碼 Patents	
(中國) ZL 02 2 08906.3	Patent No.188042
China ZL 01 2 32355.1	
(台灣) Patent No.188042	Patent No.180593
Taiwan Patent No.164277	

規格 Specifications:

型號 Code NO.	搪頭規格 Boring Head Type	接合型號 LBK No.	搪孔範圍Dmm Boring Range	L mm	C mm	刀片規格 Insert	重量 kg Weight
SNG0025	RBH25-33-C	LBK2	25~ 33	45	24	CCMT060204	0.15
SNG0026	RBH32-42-C	LBK3	32~ 42	55	31	CCMT060204	0.3
SNG0027	RBH32-42-T					TCMT110204	
SNG0028	RBH40-55-C	LBK4	40~ 55	65	39	CCMT09T304	0.5
SNG0029	RBH40-55-T					TCMT16T304	
SNG0030	RBH40-55-S					SCMT09T304	
SNG0031	RBH52-70-C	LBK5	52~ 70	75	50	CCMT09T304	1
SNG0032	RBH52-70-T					TCMT16T304	
SNG0033	RBH52-70-S					SCMT09T304	
SNG0034	RBH68-92-C	LBK6	68~ 92	85	64	CCMT120408	2
SNG0035	RBH68-92-T					TCMT16T304	
SNG0036	RBH68-92-S					SCMT120404	
SNG0037	RBH90-122-C	LBK6	90~ 122	100	80	CCMT120408	2.9
SNG0038	RBH90-122-T					TCMT220408	
SNG0039	RBH90-122-S					SCMT120404	
SNG0040	RBH120-164-C	BST Series	120~ 164	95	100	CCMT120408	3.8
SNG0041	RBH120-164-T					TCMT220408	
SNG0042	RBH120-164-S					SCMT120404	
SNG0043	RBH160-204-C		160~ 204		130	CCMT120408	4.8
SNG0044	RBH160-204-T					TCMT220408	
SNG0045	RBH160-204-S					SCMT120404	

BORING SYSTEM

新型RBH-LA可調式雙刃粗搪刀系列 《搪孔範圍Ø25 - Ø204mm》

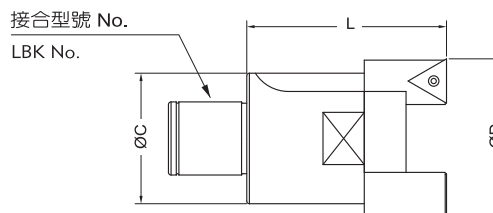
Indexable Twin-bit Rough Boring Head RBH-LA 《Boring Range from Ø25 - Ø204mm》

特色

1. 刀片支持座厚度增加，剛性增強。
2. 內藏式水孔，直接冷卻，刀片壽命長。
3. 排屑槽設計，增加深孔排屑功能。
4. 連接壓板使刀頭與刀座一體，增加切削剛性。
5. 獨特高低段差設計，平刃或高低刃均可採用。

Features

1. Thickened cartridge with higher rigidity.
2. Coolant nozzle easily cools the insert elongating its working life.
3. Completed with chip pocket, improving chip flow of deep boring.
4. Clamp plate solidifies cartridges and head, upgrading cutting rigidity.
5. Patented step boring design; suitable for both level boring and step boring.



專利號碼 Patents

(中國)	ZL 02 2 08906.3
China	ZL 01 2 32355.1
(台灣)	Patent No.188042
Taiwan	Patent No.180593

規格 Specifications:

型號 Code NO.	搪頭規格 Boring Head Type	接合型號 LBK No.	搪孔範圍D mm Boring Range	L mm	C mm	刀片規格 Insert	重量 kg Weight
SNG0046	RBH25-35LA-C	LBK2	25~35	50	24	CCMT060204	0.15
SNG0047	RBH32-45LA-C	LBK3	32~45	60	31	CCMT060204	0.3
SNG0048	RBH32-45LA-T					TCMT110204	
SNG0049	RBH40-55LA-C	LBK4	40~55	74	39	CCMT09T304	0.6
SNG0050	RBH40-55LA-T					TCMT16T304	
SNG0051	RBH40-55LA-S					SCMT09T304	
SNG0052	RBH52-75LA-C	LBK5	52~75	80	50	CCMT09T304	1
SNG0053	RBH52-75LA-T					TCMT16T304	
SNG0054	RBH52-75LA-S					SCMT09T304	
SNG0055	RBH68-100LA-C	LBK6	68~100	90	66	CCMT120408	2.5
SNG0056	RBH68-100LA-T					TCMT16T304	
SNG0057	RBH68-100LA-S					SCMT120404	
SNG0058	RBH90-130LA-C	LBK6	90~130	100	88	CCMT120408	3.1
SNG0059	RBH90-130LA-T					TCMT16T304	
SNG0060	RBH90-130LA-S					SCMT120404	
SNG0040	RBH120-164LA-C	BST Series	120~164	95	100	CCMT120408	3.8
SNG0041	RBH120-164LA-T					TCMT220408	
SNG0042	RBH120-164LA-S					SCMT120404	
SNG0043	RBH160-204LA-C		160~204		130	CCMT120408	4.8
SNG0044	RBH160-204LA-T					TCMT220408	
SNG0045	RBH160-204LA-S					SCMT120404	

★RBH120LA,160LA與RBH120,160為相同產品 ★RBH120LA and RBH160LA are the same as RBH120 and RBH160 individually.



CBH微調精搪刀系列 《搪孔範圍Ø20 - Ø202mm》

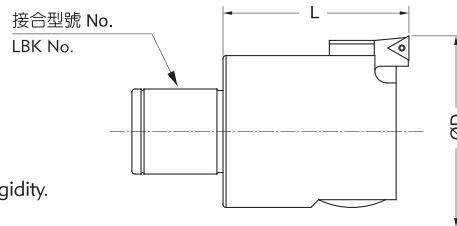
CBH Finish Boring Head 《Boring Range from Ø20 - Ø202mm》

特色

1. CBH精搪刀適用於精切削搪孔，工作範圍Ø20~Ø202mm均可搭配選用。
2. 調整刻度為圓周50等分，每格調整尺寸為直徑0.01mm，另有副尺可作更精細之調整。
3. 精密導程螺絲位於內部，不受切屑、磨耗、生鏽等影響，具有內部潤滑，精準耐用。
4. 內藏式水孔，刀尖直接冷卻，刀片壽命長。
5. 調整伸縮部為方型結構，雙支撐面固定，所以切削穩固且剛性大。

Features

1. CBH finish boring head is suitable for finish boring with working ranges from Ø20mm to Ø202mm on diameter.
2. The dial has been graduated into 50 divisions, each of which is 0.01mm on diameter. Available is a sub-dial for finer adjustment.
3. High precision internal lead screw with inner lubrication is free from the effects of chip, featuring high durability.
4. Coolant nozzle easily cools the insert elongating its working life.
5. Cartridge unit is housed in a square structure with two face support, proving high stability and rigidity.



專利號碼	Patents
(中國)	ZL 03 2 76491.X
China	ZL 03 2 08876.0
(台灣)	Patent No.217175
Taiwan	Patent No.221678

規格 Specifications:

型號 Code NO.	搪頭規格 Boring Head Type	接合型號 LBK No.	搪孔範圍ØD mm Boring Range	搪頭長度 mm Length	重量 kg Weight	刀片規格 / 螺絲 / 刀片扳手 Insert/Clamping Screw/Wrench
SNG0001	CBH20	LBK1	20-26	35	0.1	TB06/M2/T6
SNG0002	CBH20	LBK1	20-26	35	0.1	TP08/M2.2/T7
SNG0003	CBH20	LBK1	20-26	35	0.1	TC09/M2.2/T7
SNG0004	CBH25	LBK2	25-33	40	0.2	TB06/M2/T6
SNG0005	CBH25	LBK2	25-33	40	0.2	TP08/M2.2/T7
SNG0006	CBH25	LBK2	25-33	40	0.2	TC09/M2.2/T7
SNG0007	CBH32	LBK3	32-42	40	0.3	TB06/M2/T6
SNG0008	CBH32	LBK3	32-42	40	0.3	TP08/M2.2/T7
SNG0009	CBH32	LBK3	32-42	40	0.3	TC09/M2.2/T7
SNG0010	CBH40	LBK4	40-55	50	0.5	TB06/M2/T6
SNG0011	CBH40	LBK4	40-55	50	0.5	TP08/M2.2/T7
SNG0012	CBH40	LBK4	40-55	50	0.5	TC09/M2.2/T7
SNG0013	CBH52	LBK5	52-75	60	1	TP08/M2.2/T7
SNG0014	CBH52	LBK5	52-75	60	1	TP09/M2.5/T8
SNG0015	CBH52	LBK5	52-75	60	1	TC11/M2.5/T8
SNG0016	CBH68	LBK6	68-102	72	2	TP08/M2.2/T7
SNG0017	CBH68	LBK6	68-102	72	2	TP09/M2.5/T8
SNG0018	CBH68	LBK6	68-102	72	2	TC11/M2.5/T8
SNG0019	CBH100	LBK6	100-152	72	2.9	TP08/M2.2/T7
SNG0020	CBH100	LBK6	100-152	72	2.9	TP09/M2.5/T8
SNG0021	CBH100	LBK6	100-152	72	2.9	TC11/M2.5/T8
SNG0022	CBH150	LBK6	150-202	72	4.2	TP08/M2.2/T7
SNG0023	CBH150	LBK6	150-202	72	4.2	TP09/M2.5/T8
SNG0024	CBH150	LBK6	150-202	72	4.2	TC11/M2.5/T8

BORING SYSTEM

CBI小徑微調精搪刀系列《搪孔範圍Ø3 - Ø40mm》

Small Diameter Finish Boring Head Type CBI 《Boring Range from Ø3 - Ø40mm》

特色

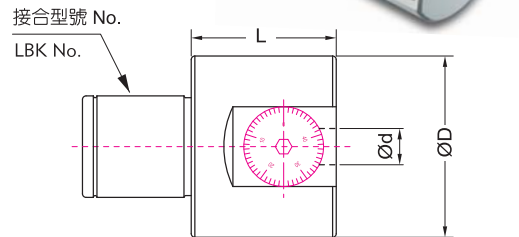
1. CBI小徑精搪刀有三種選擇，通用於Ø8~Ø40mm小孔徑使用，如使用全鑄鋼小徑精搪刀桿可加工Ø3~Ø10mm小孔。
2. 調整刻度為圓周50等分，每格調整尺寸為直徑0.01mm，另有副尺可作更精細之調整。
3. 精密導程螺絲位於內部，不受切屑、磨耗、生鏽等影響，具有內部潤滑，精準耐用。

Features

1. Available are three different styles enabling small diameter boring from Ø8mm to Ø40mm. Boring range can be within Ø3mm to Ø10mm if small diameter solid carbide boring bar has been employed.
2. The dial has been graduated into 50 divisions, each of which is 0.01mm on diameter. Available is a sub-dial for finer adjustment.
3. High precision internal lead screw is free from the effects of chip, featuring high durability.

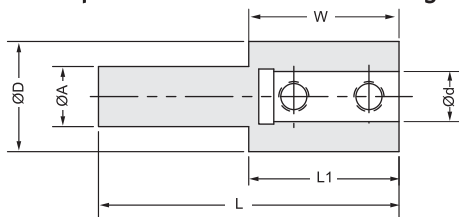
規格 Specifications:

型號 Code NO.	搪頭型號 Boring Head Type	接合型號 LBK No.	內置刀桿Ødmm Internal Diameter	外徑Ø D mm External Diameter	長度 Length	移動量 mm Feed	本體重量kg Weight
SNG0118	CBI 4	LBK4	10	39	32	0 - 2.0	0.4
SNG0119	CBI 5	LBK5	12	50	40	0 - 3.5	0.8
SNG0120	CBI 6	LBK6	16	64	50	0 - 5.0	1.4



CBI系列專用小徑精搪刀延長桿 AC型

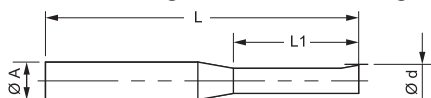
Extension Adapter for Small Diameter Boring Bar Dedicated to CBI Series Type AC



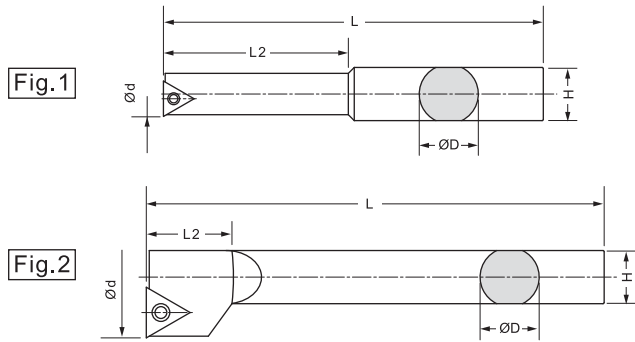
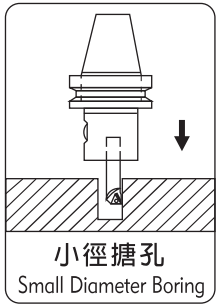
型號 Code NO.	規格 Type	柄徑 Ø A (mm)	外徑 External Dia. ØD (mm)	內徑 Ø d (mm)	延伸長度 L1 (mm)	孔深 W (mm)	全長 Length L (mm)
SNG0121	AC1006-30	10	18	06	30	25	55
SNG0122	AC1206-35	12	22	06	35	25	65
SNG0123	AC1210-35	12	22	10	35	30	65
SNG0124	AC1606-35	16	16	06	35	25	85
SNG0125	AC1610-35	16	22	10	35	30	85

CBI系列專用超小徑碳化鎢精搪孔刀 SBJ型

Super Fine Diameter Tungsten Carbide Boring Bar Dedicated to CBI Series Type SBJ



型號 Code NO.	規格 Type	搪孔範圍 Boring Range				柄徑 ØA	有效長 Length L1 (mm)	總長 Total Length L (mm)
		最小加工 直徑 Ød min	最大加工直徑 Ød max					
			CBI 4	CBI 5	CBI 6			
SNG0126	SBJ0603-15	3	7	10	13	6	15	50
SNG0127	SBJ0604-20	4	8	11	14	6	20	50
SNG0128	SBJ0605-25	5	9	12	15	6	25	60
SNG0129	SBJ0606-30	6	10	13	16	6	30	60
SNG0130	SBJ1008-35	8	12	15	18	10	35	75
SNG0131	SBJ1010-40	10	14	17	20	10	40	75



CBI4專用小徑搪刀桿BJ型《搪孔範圍Ø8-Ø24mm》

Fine Boring Bar Type BJ (for CBI 4) 《Boring Range Ø8 - Ø24mm》

型號 Code NO.	規格 Type	Fig.	ØD (mm)	Ød (mm)	L (mm)	L2 (mm)	H (mm)	刀片規格 Insert	螺絲 Clamp Screw	板手 Wrench
SNG0132	BJ1008-32	1	10	8	64	32	9	TB..0601..	M2	T6
SNG0133	BJ1010-40			10	72	40				
SNG0134	BJ1012-45			12	77	27				
SNG0135	BJ1016-45	2	10	16	77	27	TP..0902..	M2.5	T8	
SNG0136	BJ1020-45			20	77	27				
SNG0137	※BJ10-5PCS			BJ1008-32	BJ1010-40	BJ1012-45	BJ1016-45	BJ1020-45		

CBI5專用小徑搪刀桿BJ型《搪孔範圍Ø8-Ø27mm》

Fine Boring Bar Type BJ (for CBI5) 《Boring Range Ø8 - Ø27mm》

型號 Code NO.	規格 Type	Fig.	ØD (mm)	Ød (mm)	L (mm)	L2 (mm)	H (mm)	刀片規格 Insert	螺絲 Clamp Screw	板手 Wrench
SNG0138	BJ1208-32	1	12	8	64	32	9	TB..0601..	M2	T6
SNG0139	BJ1210-40			10	72	40				
SNG0140	BJ1212-45			12	77	45				
SNG0141	BJ1216-45	2	12	16	77	22	TP..0902..	M2.5	T8	
SNG0142	BJ1220-45			20	77	25				
SNG0143	※BJ12-5PCS			BJ1208-32	BJ1210-40	BJ1212-45	BJ1216-45	BJ1220-45		

CBI6專用小徑搪刀桿BJ型《搪孔範圍Ø8-Ø50mm》

Fine Boring Bar Type BJ (for CBI 6) 《Boring Range Ø8 - Ø50mm》

型號 Code NO.	規格 Type	Fig.	ØD (mm)	Ød (mm)	L (mm)	L2 (mm)	H (mm)	刀片規格 Insert	螺絲 Clamp Screw	板手 Wrench
SNG0144	BJ1608-32	1	16	8	74	32	15	TB..0601..	M2	T6
SNG0145	BJ1610-40			10	75	40				
SNG0146	BJ1612-53			12	85	53				
SNG0147	BJ1616-68	2	16	16	100	68	TP..0902..	M2.5	T8	
SNG0148	BJ1620-83			20	115	83				
SNG0149	BJ1625-90			25	122	90				
SNG0150	BJ1630-90			30	122	90				
SNG0151	BJ1640-90			40	122	90				
SNG0152	※BJ16-8PCS			BJ1608-32 BJ1620-83	BJ1610-40 BJ1625-90	BJ1612-53 BJ1630-90	BJ1616-68 BJ1640-90			

※表示盒裝包裝

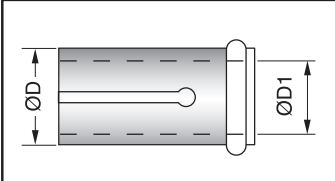
※切削加工時，小徑搪刀桿以3倍直徑伸出量為佳。

※In Box Package

※Note:Outstretch of small diameter boring is better within 3 times of its diameter when in use.

碳化鎢組合式小徑搪刀桿專用套筒EC型

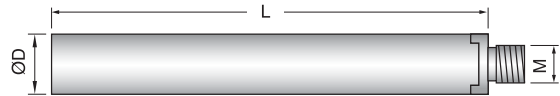
Collet for Tungsten Carbide small Diameter Modular Boring Bar Series Type EC



型號 Code NO.	規格 Type	外徑 D (mm)	內徑 D1 (mm)	適用鎢鋼刀柄 Applicable Carbide Tool Holder
SNG0153	EC1608	16	8	ST08, HC08
SNG0154	EC1610	16	10	ST10, HC10
SNG0155	EC1612	16	12	ST12, HC12
SNG0156	EC1614	16	14	ST14

碳化鎢組合式小徑搪刀桿ST型

Tungsten Carbide Small Diameter Modular Boring Bar Type ST



型號 Code NO.	規格 Type	全長 L (mm)	柄徑 D (mm)	結合牙 M (mm)	適用搪孔頭 Applicable Insert Holder	適用套筒 Applicable Bushing
SNG0157	ST08-W5-100L	100	8	M5	BE09A, BE10.5A	EC1608
SNG0158	ST10-W6-110L	110	10	M6	BE12A	EC1610
SNG0159	ST12-W6-120L	120	12		BE14A, BE16A	EC1612
SNG0160	ST14-W6-160L	160	14		BE16A	EC1614
SNG0161	ST16-W10-160L	160	16	M10	BE18A, BE20A, BE22A, BE24A BE26A, BE28A, BE30A, BE32A BE34A, BE36A, BE38A, BE40A	----

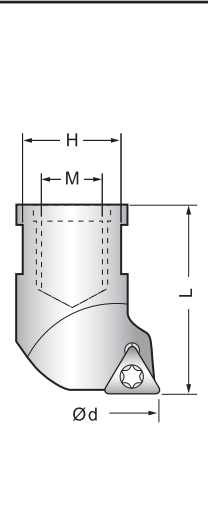
高速鋼組合式小徑搪刀桿HC型

Modular H.S.S Fine Boring Bar Type HC

型號 Code NO.	規格 Type	全長 L (mm)	柄徑 D (mm)	結合牙 M (mm)	適用搪孔頭 Applicable Insert Holder	適用套筒 Applicable Bushing
SNG0162	HC08-M5-075	75	8	M5	BE09A, BE10.5A	EC1608
SNG0163	HC10-M6-095	95	10	M6	BE12A	EC1610
SNG0164	HC12-M6-115	115	12	M6	BE14A, BE16A	EC1612
SNG0165	HC12-M10-130	130		16	M10	BE18A, BE20A, BE22A, BE24A BE26A, BE28A, BE30A, BE32A BE34A, BE36A, BE38A, BE40A
SNG0166	HC16-M10-130					

組合式搪孔頭 BE型 《搪孔範圍 Ø9-Ø50mm》

Modular Insert Holder Type BE 《Boring Range from Ø9 - Ø50mm》



型號 Code NO.	規格 Type	d (mm)	H (mm)	L (mm)	M (mm)	刀片規格 Insert	螺絲 Clamping Screw	扳手 Wrench
SNG0167	BE09A	9	7	18	M5	TP.0802..	M2.2	T7
SNG0168	BE10.5A	10.5						
SNG0169	BE12A	12						
SNG0170	BE14A	14	10	23	M6			
SNG0171	BE16A	16						
SNG0172	BE18A	18	14	27	M10			
SNG0173	BE20A	20						
SNG0174	BE22A	22						
SNG0175	BE24A	24						
SNG0176	BE26A	26						
SNG0177	BE28A	28						
SNG0178	BE30A	30						
SNG0179	BE32A	32						
SNG0180	BE34A	34						
SNG0181	BE36A	36						
SNG0182	BE38A	38						
SNG0183	BE40A	40						

超硬整體碳化鎢製搪刀桿《搪孔範圍Ø20 - Ø75mm》

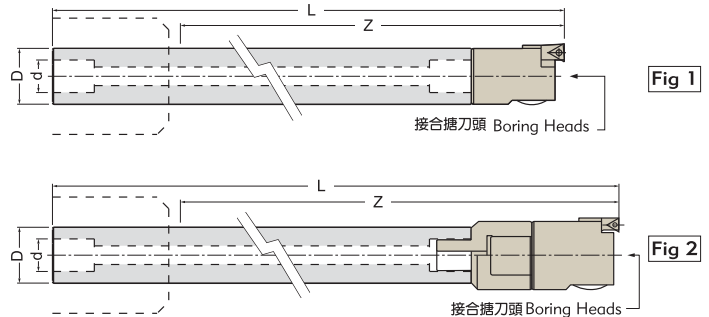
Super Hard Solid Tungsten Carbide Boring Bar 《Boring Range from Ø20 - Ø75mm》

特色

1. 超硬碳化鎢製搪刀桿，使用高韌性配方製造，堅韌耐用，實現高硬度、高剛性、高抗震性，可施行超深孔搪孔加工(10D)。
2. 各種規格均有內部水孔，深孔加工時排屑及冷卻效果良好。
3. 直柄結構，加工深度可依加工須求自行調整。
4. 本體兩端均設有結合孔，如遇一端損壞時，另一端即能配合使用，增加刀桿本身價值，更符合經濟效益。

Features

1. Super hard tungsten carbide boring bar made from high toughness compound is tough and durable, highly materializing features of super hardness, high rigidity and extra vibration resistance, most suitable for extra depth boring (10D).
2. Standard internal coolant hole is built in every size of the bar, best for cooling and chip evacuation in deep hole boring.
3. Featuring straight shank structure, the bar can be adjusted to different working lengths.
4. On both ends of main body integrated are soldering holes. One hole will be superseded by the other upon breaking. This will reduce your cost and greatly increase the value of boring bar.



碳化鎢直柄搪刀桿 Super Head Solid Tungsten Carbide Boring Bar

規格 Specifications:

型號 Code NO.	規格 Type	樣式 Fig	內孔徑 Inside Dia. d (mm)	外徑 External Dia. D (mm)	全長 Length L (mm)	有效長 Z (mm)	接合搪刀頭 Applicable Boring Heads	搪孔範圍 Boring Diameter (mm)	重量 Weight (kg)
SNG0184	SC19-LBK1-150L	1	11	19	225	150	CBH20	20-26	0.8
SNG0185	SC19-LBK1-200L				275	200			1
SNG0186	SC24-LBK2-180L		14	24	260	180	CBH25	25-33	1.45
SNG0187	SC24-LBK2-240L				320	240			1.8
SNG0188	SC32-LBK3-240L				18	32			320
SNG0189	SC32-LBK3-310L	390	310	3.5					
SNG0190	SC32-LBK3/4-280L	2	18/22	32/39	365	280	CBH40	40-55	3.1
SNG0191	SC32-LBK3/4-350L				435	350			3.8
SNG0192	SC40-LBK4-310L	1	22	40	390	310	CBH40	41-55	5
SNG0193	SC40-LBK4-400L				480	400			6.5
SNG0194	SC40-LBK4/5-360L	2	22/28	40/50	445	360	CBH52	52-75	5.6
SNG0195	SC40-LBK4/5-450L				535	450			7.1

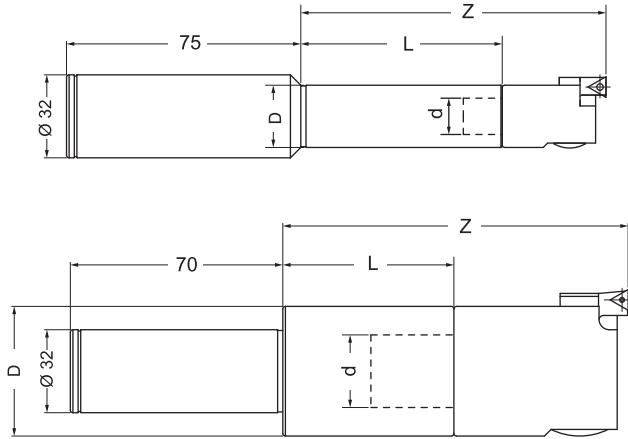
※此規格不含搪刀頭 ※Boring head is not included.

※LBK3/4與LBK4/5為小變大異徑延長桿 ※LBK3/4 and LBK4/5 are extensions with magnifying diameter.

BORING SYSTEM

C32直柄搪刀桿

C32 Straight Shank Boring Bar 接合搪刀頭



規格 Specifications:

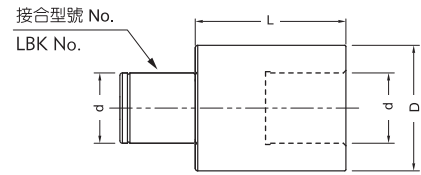
型號 Code NO.	搪頭規格 Type	內孔徑 Inside Dia. d (mm)	外徑 External Dia. D (mm)	長度 Length L (mm)	有效長 Z (mm)	接合搪刀頭 Applicable Boring Heads	重量 Weight (kg)
SNG0196	C32-LBK1-075L	11	19	75	110	CBH20	0.5
SNG0197	C32-LBK2-070L	14	24	70	110	RBH25 ; RBH25LA	0.55
SNG0198	C32-LBK2-120L	14	24	120	160	CBH25	0.8
SNG0199	C32-LBK3-070L	18	31	70	110	RBH32 ; RBH32LA	0.65
SNG0200	C32-LBK3-120L	18	31	120	160	CBH32	0.95
SNG0201	C32-LBK4-060L	22	39	60	110	RBH40 ; RBH40LA	0.8
SNG0202	C32-LBK4-110L	22	39	110	160	CBH40 ; CBI 4	1.2
SNG0203	C32-LBK5-060L	28	50	60	120	RBH52 ; RBH52LA	1
SNG0204	C32-LBK5-120L	28	50	120	180	CBH52 ; CBI 5	1.95
SNG0205	C32-LBK6-060L	36	64	60	130	RBH68; RBH90	1.55
SNG0206	C32-LBK6-120L	36	64	120	190	RBH68LA; RBH90LA CBH68,100,150 ; CBI 6	2.9

※此規格不含搪刀頭 ※Boring head

Chum Power®

等徑搪刀延長桿

Extension(Constant Diameter)

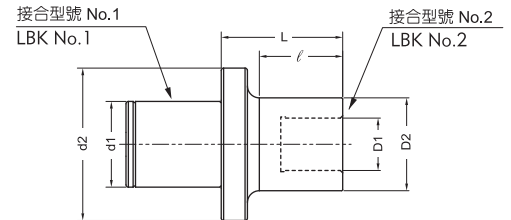


規格 Specifications:

型號 Code NO.	規格 Type	d mm	D mm	L mm	接合搪刀頭 Applicable Boring Heads	重量 Weight
SNG0207	LBK1-1-30L	11	19	30	CBH20	0.07
SNG0208	LBK2-2-30L	14	24	30	RBH25 ; CBH25	0.1
SNG0209	LBK3-3-30L	18	31	30	RBH32 ; CBH32	0.15
SNG0210	LBK4-4-45L	22	39	45	RBH40 ; CBH40 ; CBI4	0.4
SNG0211	LBK5-5-60L	28	50	60	RBH52 ; CBH52 ; CBI5	0.8
SNG0212	LBK6-6-60L	36	64	60	RBH68/RBH90 ; CBH68,100,150 ; CBI6	1.4

異徑搪刀延長桿

Extension(Reducing)



規格 Specifications:

型號 Code NO.	規格 Type	d 1 mm	d 2 mm	D1 mm	D2 mm	L mm	ℓ mm	接合搪刀頭 Applicable Boring Heads	重量 kg Weight
SNG0213	LBK2-1-36L	14	24	11	19	36	30	CBH20	0.1
SNG0214	LBK3-1-41L	18	31			14	24	41	30
SNG0215	LBK3-2-37L			18	31	14	24	37	25
SNG0216	LBK4-1-58L	22	39	11	19	58	40	CBH20	0.3
SNG0217	LBK4-2-50L			14	24	50	36	RBH25 ; CBH25	0.3
SNG0218	LBK4-3-50L			18	31	50	37	RBH32 ; CBH32	0.35
SNG0219	LBK5-1-60L	28	50	11	19	60	40	CBH20	0.45
SNG0220	LBK5-2-54L			14	24	54	35	RBH25 ; CBH25	0.45
SNG0221	LBK5-2-74L			14	24	74	55	RBH25 ; CBH25	0.5
SNG0222	LBK5-3-47L			18	31	47	29	RBH32 ; CBH32	0.5
SNG0223	LBK5-3-72L			18	31	72	54	RBH32 ; CBH32	0.6
SNG0224	LBK5-4-42L			22	39	42	25	RBH40 ; CBH40	0.5
SNG0225	LBK5-4-67L			22	39	67	50	RBH40 ; CBH40	0.7
SNG0226	LBK6-1-70L	36	64	11	19	70	40	CBH20	0.9
SNG0227	LBK6-2-63L			14	24	63	45	RBH25 ; CBH25	0.7
SNG0228	LBK6-2-93L			14	24	93	75	RBH25 ; CBH25	0.8
SNG0229	LBK6-3-56L			18	31	56	39	RBH32 ; CBH32	0.75
SNG0230	LBK6-3-96L			18	31	96	79	RBH32 ; CBH32	0.95
SNG0231	LBK6-4-51L			22	39	51	35	RBH40 ; CBH40	0.85
SNG0232	LBK6-4-101L			22	39	101	85	RBH40 ; CBH40	1.3
SNG0233	LBK6-5-41L			28	52	41	25	RBH52 ; CBH52	0.85
SNG0234	LBK6-5-91L	28	52	91	75	RBH52 ; CBH52	1.45		